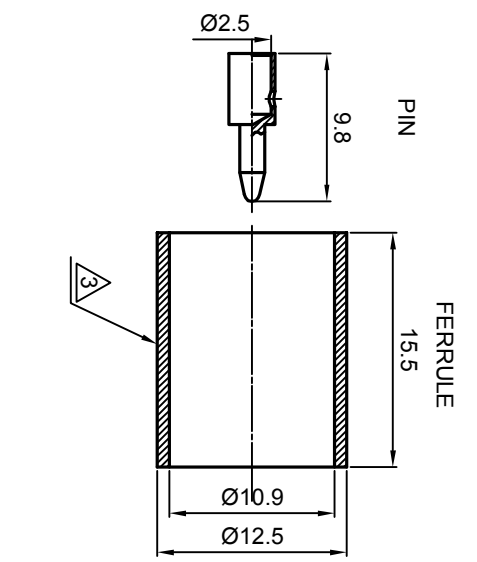
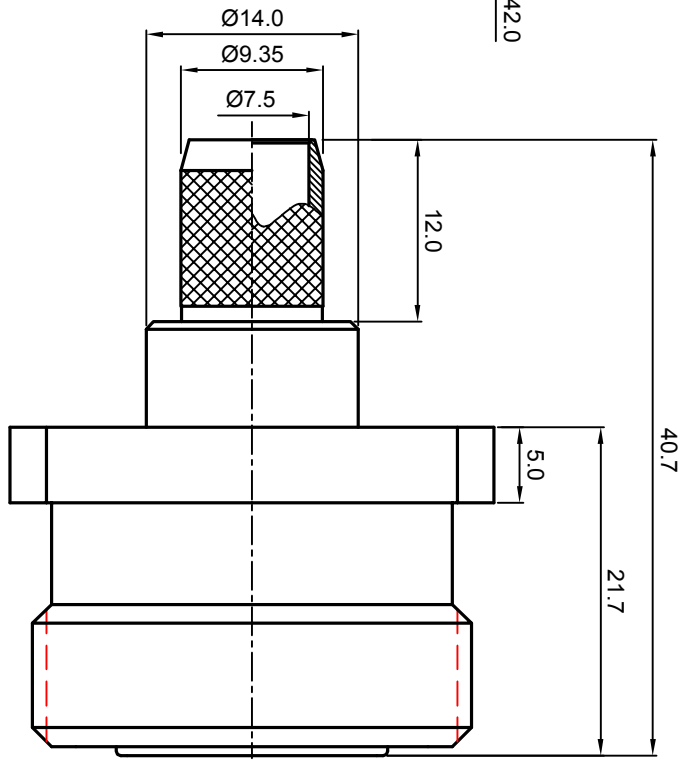
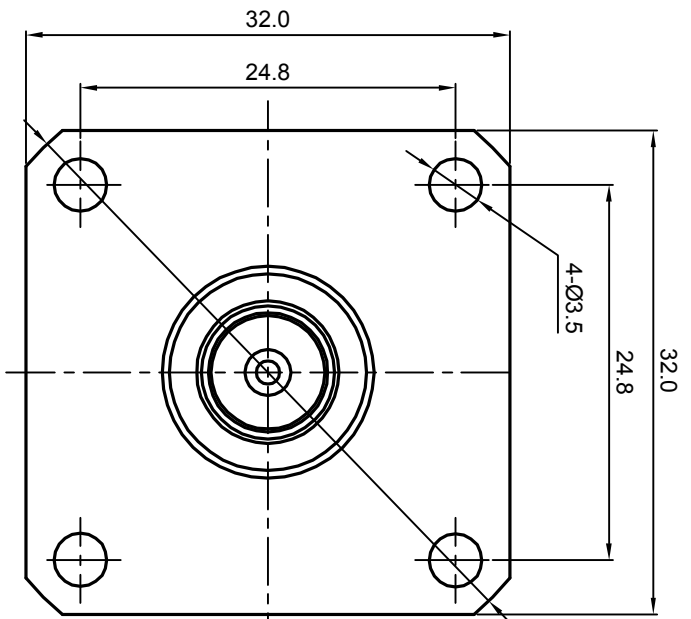
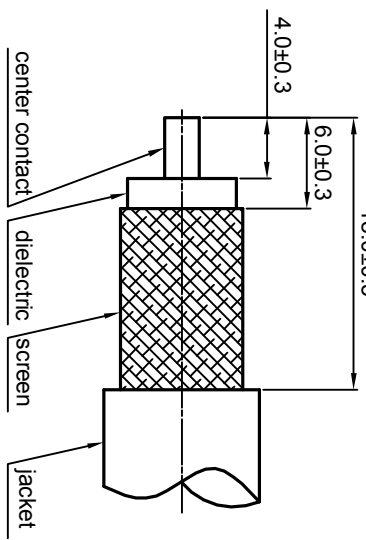


NOTES: (UNLESS OTHERWISE SPECIFIED)

1. The interface comply with IEC189-4
 2. Part must be packaged to avoid any damaged during transportation
- ⚠ After crimping dimension should be AF/SW 10.9.



RECOMMENDED CABLE STRIPPING DIMENSIONS
18.0±0.3



REV.	DESCRIPTION	APPROVED	DATE	ECN
A	REL. TO PRODUCTION	Johnny	23Jan08	

MATERIAL SEE BOM FOR DETAILS		TOLERANCES Oplace X ±1 1place X ±0.1 2place XX ±0.05 Angle ±5°		THIRD ANGLE PROJECTION		TITLE Zeeteq	
FINISH SEE BOM FOR DETAILS		Remove burrs and sharp edges		GENERAL ECCENTRICITY <input checked="" type="checkbox"/> 0.06		DWG. NO. 5084.716.JSC.11.233	
Plating part to be touched by gloves		-0.2		DRAWN BY Danny		DATE 26OCT07	
Dimension apply before plating		+0.2		CHECKED BY Collin		DATE 23Jan08	
XXX - measuring point for plating		APPROVED BY Johnny		DATE 23Jan08		REV. A	
SURFACE		VOLUME		SCALE 2:1		DO NOT SCALE DRAWING	
				SIZE A4		SHEET 1 of 1	

NOTICE: Those drawings and specifications are the property of ZEETEQ CORPORATION and used only for the specify purpose authorised by ZEETEQ

