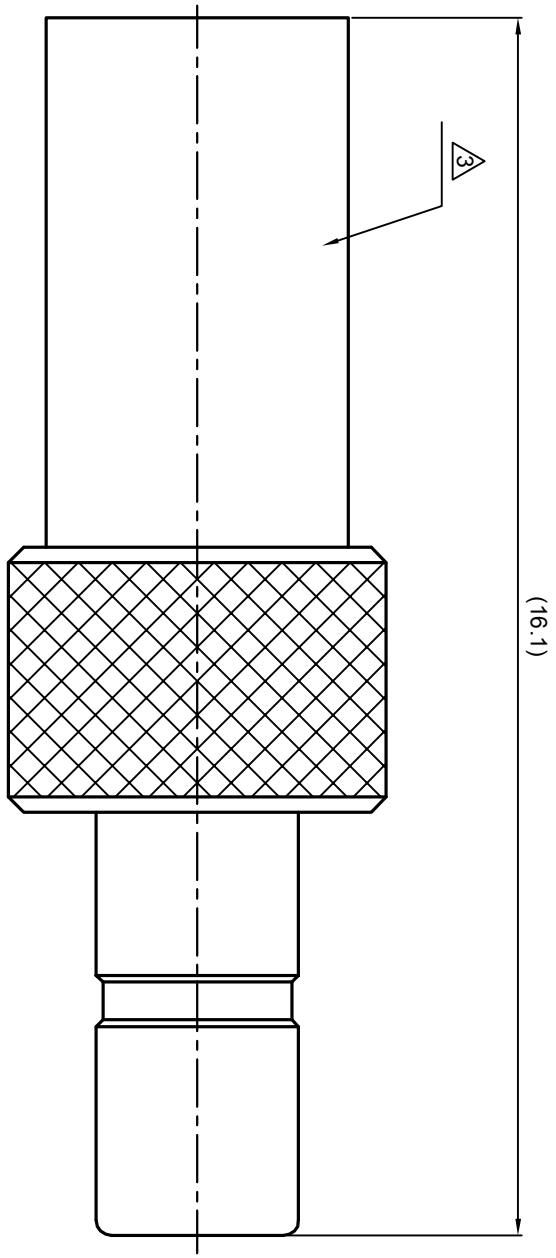


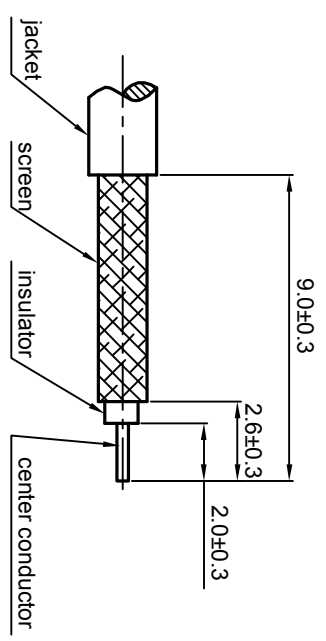
NOTES: (UNLESS OTHERWISE SPECIFIED)

1. The interface comply with IEC169-10.
2. Part must be packaged to avoid any damages during transportation.
3. After crimping dimension should be SW3.25

REV.	DESCRIPTION	APPROVED	DATE	ECN



RECOMMENDED CABLE STRIPPING DIMENSIONS



MATERIAL		SEE BOM FOR DETAILS		TOLERANCES		THIRD ANGLE PROJECTION		TITLE	
SEE BOM FOR DETAILS		SEE BOM FOR DETAILS		Opface X ±1 1place X ±0.1 2place .XX ±0.05 Angle ±5°				Zee-teq SSMB, PLUG, CABLE	
FINISH		SEE BOM FOR DETAILS		Remove burrs and sharp edges		GENERAL ECCENTRICITY		DWG NO.	
Plating part to be touched by gloves		SEE BOM FOR DETAILS				<input checked="" type="checkbox"/> 0.06		5328.SSMB.PSC.06.111	
Dimension apply before plating		SEE BOM FOR DETAILS		-0.2 +0.2		DRAWN BY		SCALE	
XXX - measuring point for plating		SEE BOM FOR DETAILS		-0.2 +0.2		Colin		10:1	
SURFACE		VOLUME		NOTICE: Those drawings and specifications are the property of ZEEITEQ CORPORATION and used only for the specify purpose authorised by ZEEITEQ		CHECKED BY		DO NOT SCALE DRAWING	
						APPROVED BY		SIZE	
								A4	
								SHEET	
								1 of 1	
								REV.	
								S1	

