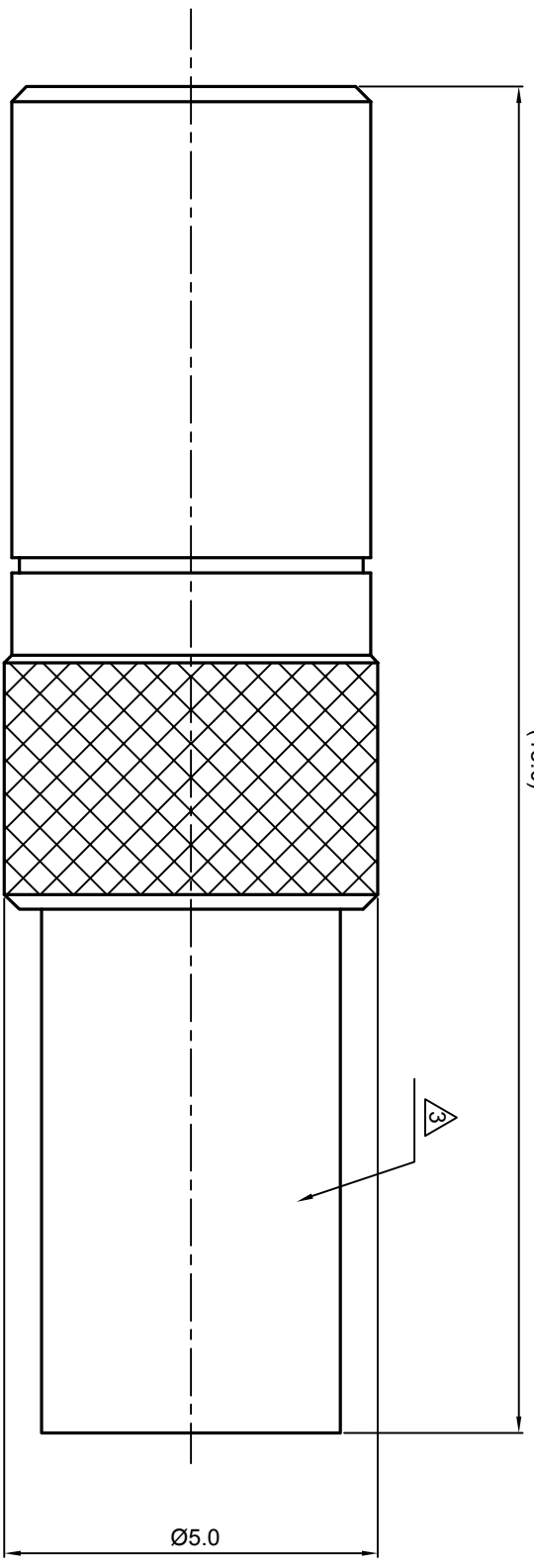


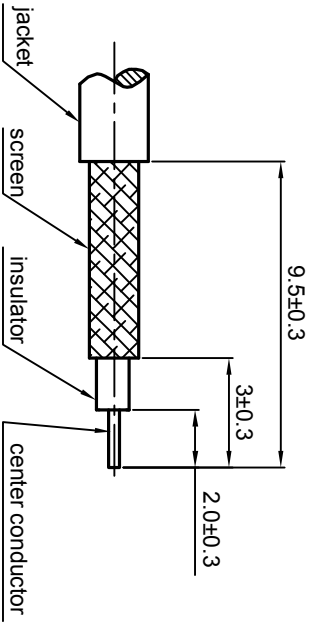
**NOTES: (UNLESS OTHERWISE SPECIFIED)**

1. The interface comply with IEC:169-10.
2. Part must be packaged to avoid any damages during transportation.

3. After crimping dimension should be SW3.25



RECOMMENDED CABLE STRIPPING DIMENSIONS



REV.	DESCRIPTION	APPROVED	DATE	ECN

<b>MATERIAL</b> SEE BOM FOR DETAILS		<b>TOLERANCES</b> Opface X ±1 1place .X ±0.1 2place .XX ±0.05 Angle ±5°		<b>THIRD ANGLE PROJECTION</b> 		<b>TITLE</b> SSMB, JACK, CABLE	
<b>FINISH</b> SEE BOM FOR DETAILS		Remove burrs and sharp edges 		GENERAL ECCENTRICITY <input checked="" type="checkbox"/> 0.06		DWG NO. 5336.SSMB.JSC.06.111	
Plating part to be touched by gloves Dimension apply before plating XXX - measuring point for plating		DRAWN BY Collin		NAME Collin		DATE 17/Sep08	
<b>SURFACE</b>		<b>CHECKED BY</b>		<b>APPROVED BY</b>		SCALE 10:1	
<b>VOLUME</b>		NOTICE: Those drawings and specifications are the property of ZEETEQ CORPORATION and used only for the specify purpose authorised by ZEETEQ		APPROVED		DO NOT SCALE DRAWING	
SURFACE		VOLUME		DATE		SIZE A4	
SURFACE		VOLUME		DATE		SHEET 1 of 1	
SURFACE		VOLUME		DATE		REV. S1	

**Zeeteq**

1.6