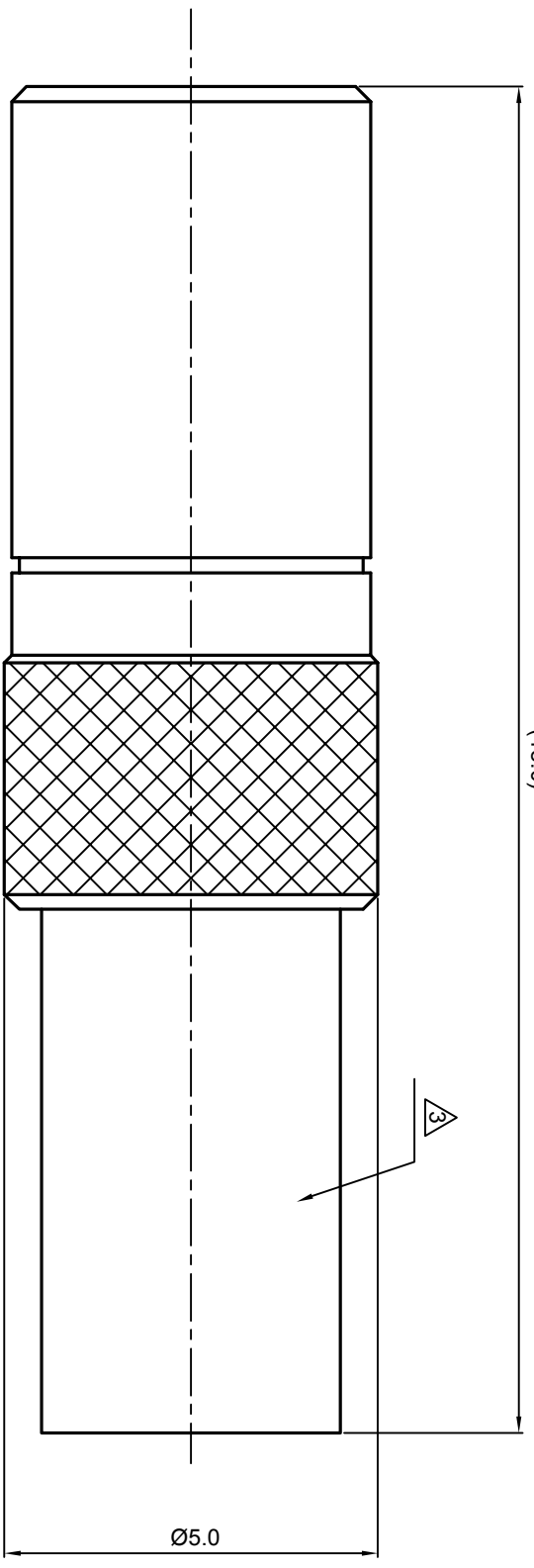
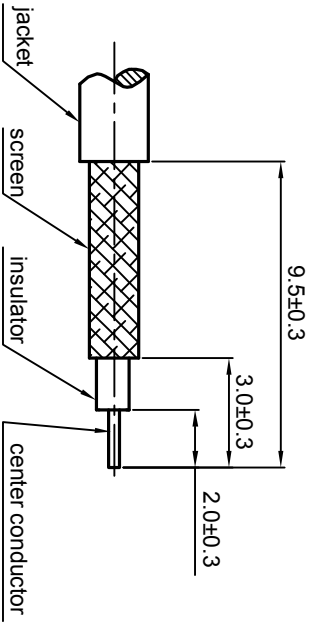


**NOTES: (UNLESS OTHERWISE SPECIFIED)**

1. The interface comply with IEC:169-10.
2. Part must be packaged to avoid any damages during transportation.
3. After crimping dimension should be SW3.25



RECOMMENDED CABLE STRIPPING DIMENSIONS



REV.	DESCRIPTION	APPROVED	DATE	ECN

MATERIAL	
SEE BOM FOR DETAILS	
FINISH	
SEE BOM FOR DETAILS	
Plating part to be touched by gloves	
Dimension apply before plating	
XXX - measuring point for plating	
SURFACE	VOLUME

TOLERANCES	
Opplace	X $\pm 1$
1place	.X $\pm 0.1$
2place	.XX $\pm 0.05$
Angle	$\pm 5^\circ$
Remove burrs and sharp edges	
	-0.2
	+0.2

THIRD ANGLE PROJECTION	
GENERAL ECCENTRICITY <input checked="" type="checkbox"/> 0.06	
DRAWN BY	NAME
Collin	Collin
CHECKED BY	DATE
	17/Sep08
APPROVED BY	

**NOTICE:** Those drawings and specifications are the property of ZEETEQ CORPORATION and used only for the specify purpose authorised by ZEETEQ

TITLE		SCALE		SHEET	
SSMB, JACK, CABLE		10:1		1 of 1	
DWG NO.		DO NOT SCALE DRAWING		REV.	
5337.SSMB.JSC.07.111				S1	
Zee-teq					

