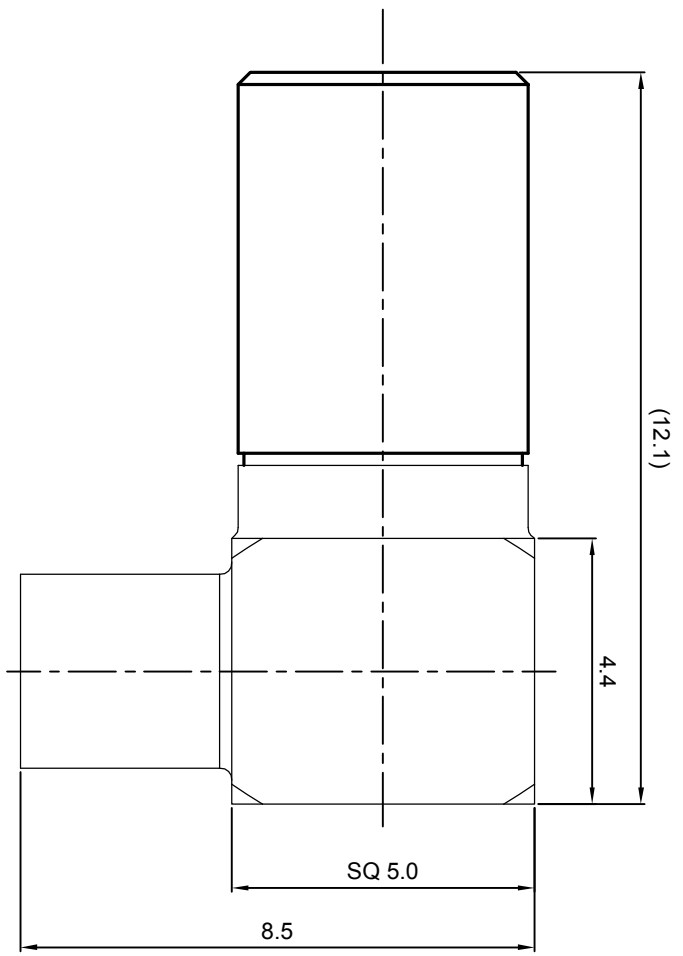


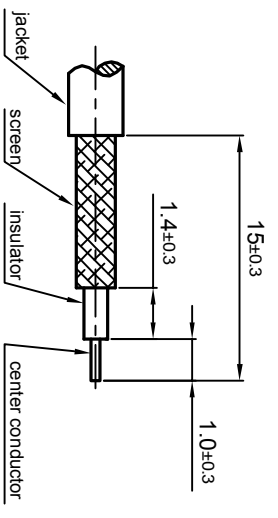
**NOTES: (UNLESS OTHERWISE SPECIFIED)**

1. The interface comply with IEC169-10.
2. Part must be packaged to avoid any damages during transportation.

REV.	DESCRIPTION	APPROVED	DATE	EON



**RECOMMENDED CABLE STRIPPING DIMENSIONS**



MATERIAL	SEE BOM FOR DETAILS
FINISH	SEE BOM FOR DETAILS
Plating part to be touched by gloves	
Dimension apply before plating	
XXX - measuring point for plating	
SURFACE	VOLUME

TOLERANCES	X ±1 .X ±0.1 .XX ±0.05 Angle ±5°
Remove burrs and sharp edges	

THIRD ANGLE PROJECTION	
GENERAL ECCENTRICITY	<input checked="" type="checkbox"/> 0.06
DRAWN BY	NAME DATE
Collin	27Sep08
CHECKED BY	
APPROVED BY	

TITLE	<b>SSMB, JACK, CABLE</b>		
DWG NO.	5338.SSMB.JRC.02.111		
SCALE	8:1	DO NOT SCALE DRAWING	SIZE A4
REV.	S1	REV.	S1

