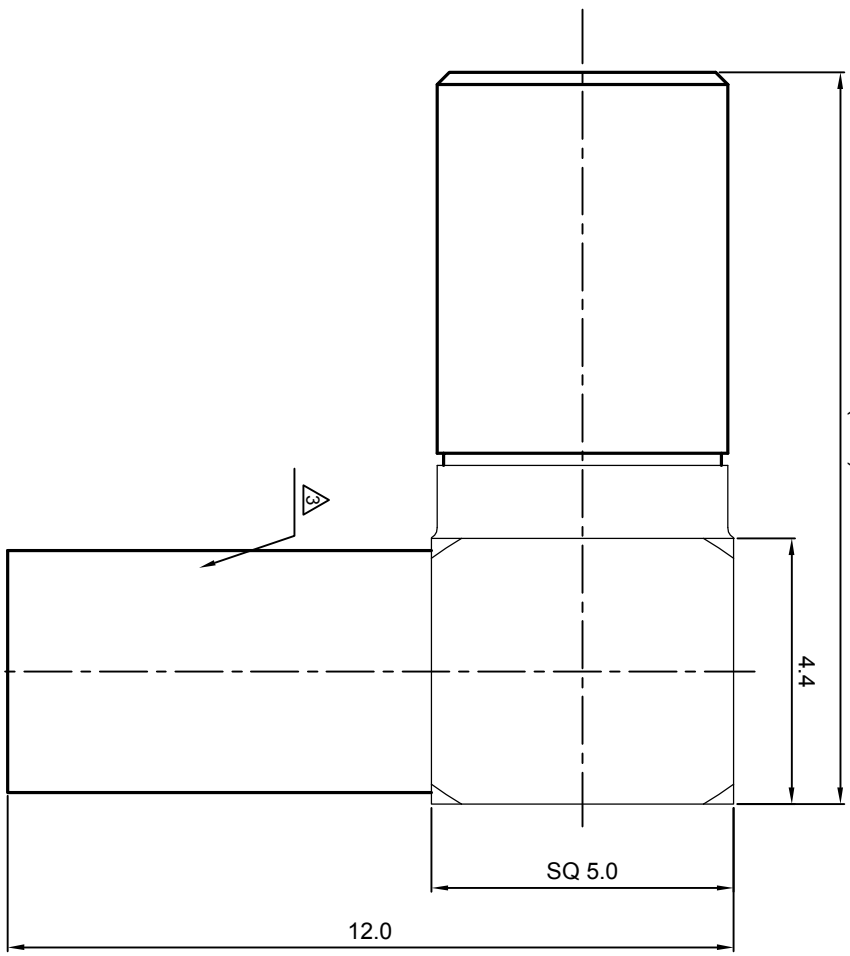


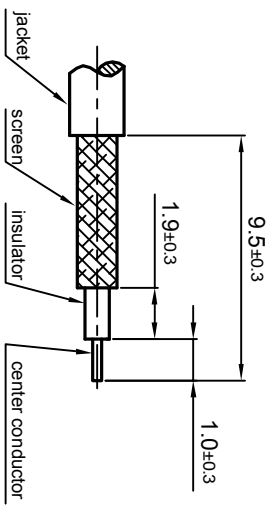
NOTES: (UNLESS OTHERWISE SPECIFIED)

1. The interface comply with IEC169-10.
 2. Part must be packaged to avoid any damages during transportation.
- After crimping dimension should be SW3.25

(12.1)



RECOMMENDED CABLE STRIPPING DIMENSIONS



REV.	DESCRIPTION	APPROVED	DATE	ECN

MATERIAL SEE BOM FOR DETAILS		TOLERANCES 1place X ±1 2place .X ±0.1 .XX ±0.05 Angle ±5°		THIRD ANGLE PROJECTION 		TITLE SSMB, JACK, CABLE	
FINISH SEE BOM FOR DETAILS		Remove burrs and sharp edges 		GENERAL ECCENTRICITY 0.06		DWG NO. 5341.SSMB.JRC.07.111	
Plating part to be touched by gloves		DRAWN BY Colln		NAME Colln		DATE 08Oct08	
Dimension apply before plating		CHECKED BY		APPROVED BY		REV. S1	
XXX - measuring point for plating		NOTICE: Those drawings and specifications are the property of ZEETEQ CORPORATION and used only for the specify purpose authorised by ZEETEQ		SCALE 8:1		DO NOT SCALE DRAWING	
SURFACE		VOLUME		SIZE A4		SHEET 1 of 1	

Zeeteq

1.6