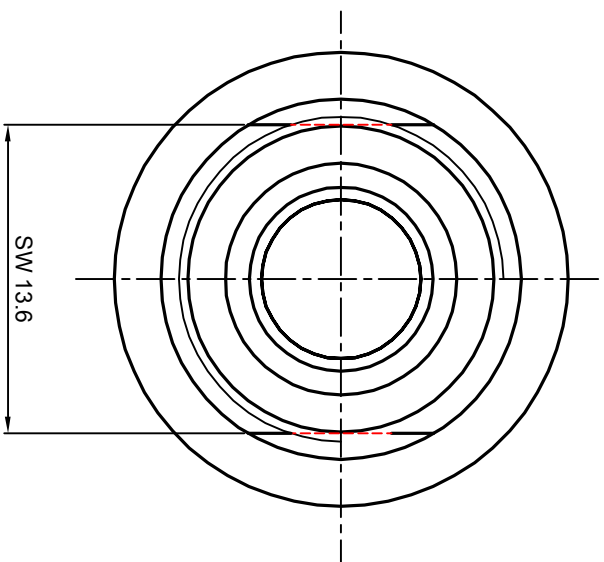
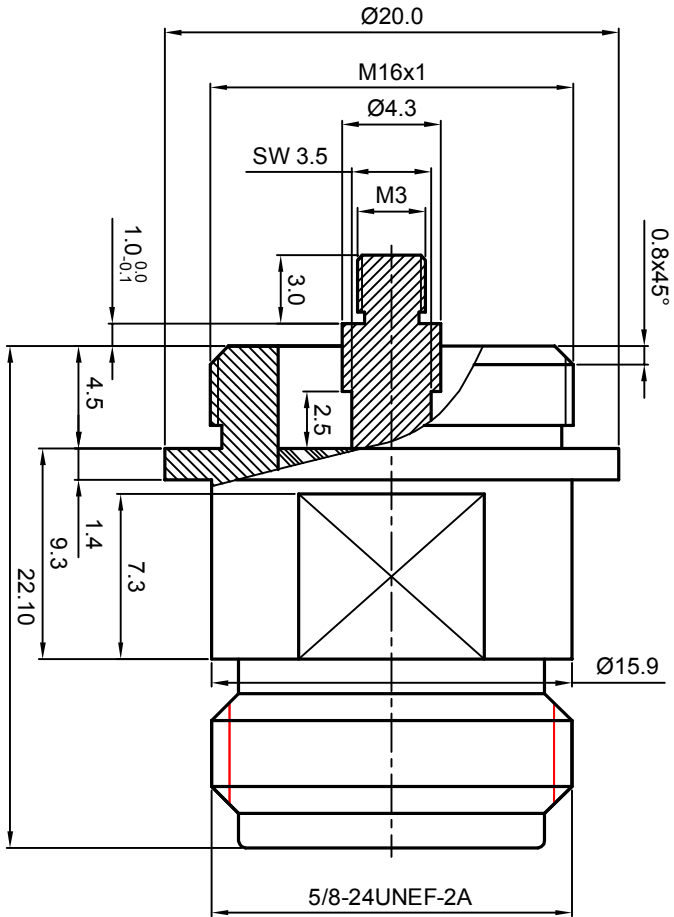


**NOTES: (UNLESS OTHERWISE SPECIFIED)**

1. Mating according to IEC:169-16.
2. With a protective cap.
3. Part must be packaged to avoid any damages during transportation.



REV.	DESCRIPTION	APPROVED	DATE	EON

MATERIAL		SEE BOM		TOLERANCES		THIRD ANGLE PROJECTION		TITLE				
FINISH		SEE BOM		Opface X ±1 1place .X ±0.1 2place .XX ±0.05 Angle ±5°								
Plating part to be touched by gloves		Remove burrs and sharp edges				<table border="1"> <tr> <td>GENERAL ECCENTRICITY</td> <td><input checked="" type="checkbox"/></td> <td>0.06</td> </tr> </table>		GENERAL ECCENTRICITY	<input checked="" type="checkbox"/>	0.06	N, JACK, FLANGE	
GENERAL ECCENTRICITY	<input checked="" type="checkbox"/>	0.06										
Dimension apply before plating		DRAWN BY		NAME		DATE		DWG NO.				
XXX - measuring point for plating		Colin		Colin		03Jan08		6133.N.JSF.00.230				
SURFACE		VOLUME		CHECKED BY		APPROVED BY		SCALE				
								3:1				
								DO NOT SCALE DRAWING				
								SIZE				
								A4				
								SHEET				
								1 of 1				
								REV.				
								S1				

**NOTICE:** Those drawings and specifications are the property of ZEETEQ CORPORATION and used only for the specify purpose authorised by ZEETEQ

