

DATA SHEET

Receptacle connector



Part Number

6029.N.JSF.00.150

Description

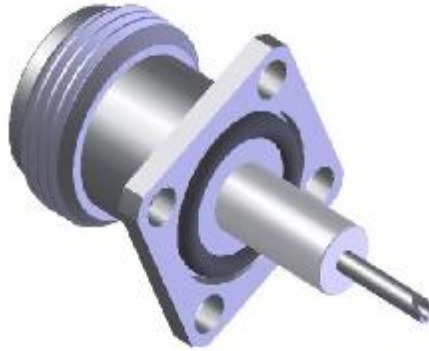
N, Jack, Straight, Flange Mount

Interface Standard

IEC 60169-16

Suitable Cable

N/A



Electrical Data

Impedance	50	Ω		
Max. operating frequency	11	GHz		
Frequency range	DC to 1GHz	1 to 2.5GHz	2.25to 6GHz	6 to 11GHz
VSWR	≤1.04	≤1.07	≤1.14	≤--
Insertion loss	0.03 $\sqrt{f(\text{GHz})}$	dB		
Insulation resistance	≥5000	MΩ		
Center contact resistance	≤1	mΩ		
Outer contact resistance	≤0.25	mΩ		
Dielectric withstanding voltage	≥2500	Vrms @ 50Hz		
Working voltage	≥1000	Vrms @ 50Hz		

Mechanical Data

Mating cycles	≥500	
coupling recommended toque	≥0.7~1.1	Nm
coupling proof torque	≥1.7	Nm
coupling nut tensile strength	≥450	N
Center contact axial force	≥28	N
Center contact axial torque	≥0.03	Nm
contact gauge ret. Force	≥0.56	N

Environmental Data

Operating temperature	-55~155℃	silicone rubber limited
2002/95/EC (ROHS)	compliant	
Sealing	IP68 (IEC60529)	
Thermal shock	MIL-STD-202 Method107, condition B	
Moisture resistance	MIL-STD-202 Method106	
Corrosion resistance	MIL-STD-202 Method101, condition B	
Vibration	MIL-STD-202 Method204, condition D	
Shock	MIL-STD-202 Method213, condition I	

Material Data

<u>Piece Parts</u>	<u>Material</u>	<u>Surface Plating</u>
center contact	Beryllium copper	Au
body	Brass	Ni
insulator	PTFE	
O-ring	silicone rubber	