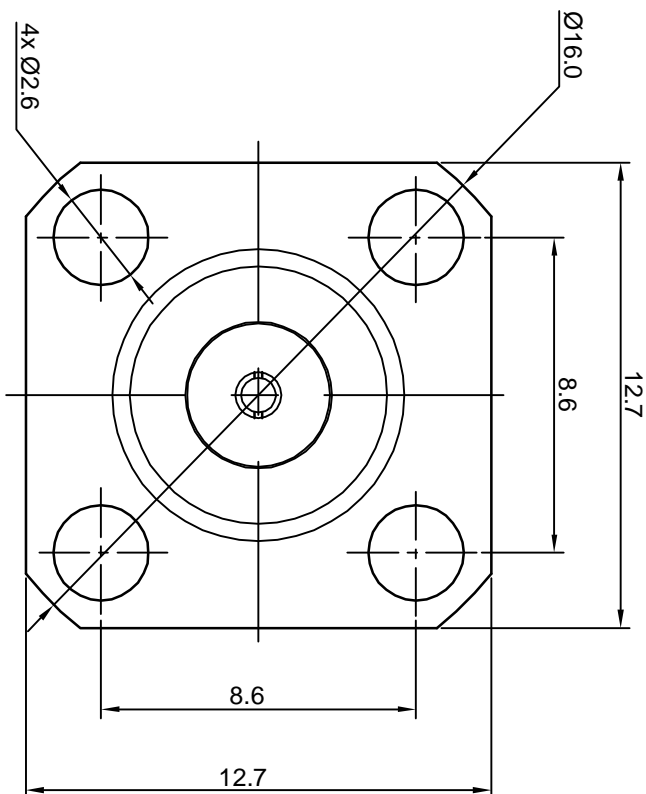
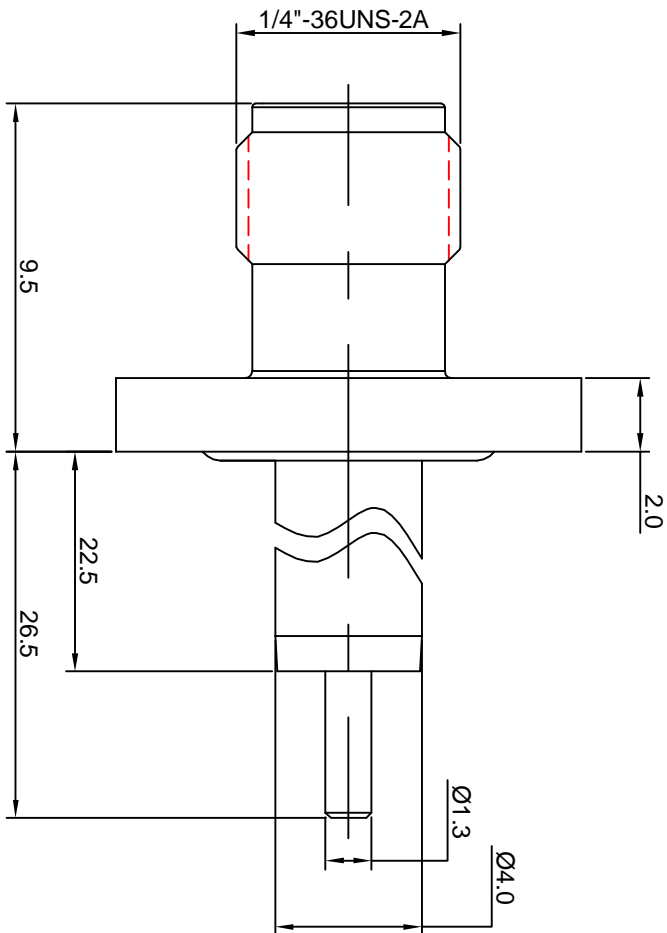


NOTES: (UNLESS OTHERWISE SPECIFIED)

1. INTERFACE COMPLY WITH IEC 169-15.
2. PART MUST BE PACKAGED TO AVOID ANY DAMAGES DURING TRANSPORTATION.



REV.	DESCRIPTION	APPROVED	DATE	ECN

MATERIAL		SEE BOM FOR DETAILS		TOLERANCES		THIRD ANGLE PROJECTION		TITLE				
FINISH		SEE BOM FOR DETAILS		Optance X ±1 1place X ±0.1 2place .XX ±0.05 Angle ±5°								
SEE BOM FOR DETAILS		Remove burrs and sharp edges		<table border="1"> <tr> <td>GENERAL ECCENTRICITY</td> <td></td> <td>0.06</td> </tr> </table>		GENERAL ECCENTRICITY				0.06	DRAWN BY	
GENERAL ECCENTRICITY		0.06										
Plating part to be touched by gloves		-0.1		DRAWN BY		Colin	11Sep07	CHECKED BY				
Dimension apply before plating		+0.1		CHECKED BY		Joy Zhou	11Sep07	APPROVED BY				
XXX - measuring point for plating		Remove burrs and sharp edges		APPROVED BY		Johnny	11Sep07	DWG NO.				
SURFACE		VOLUME		NOTICE: Those drawings and specifications are the property of ZEETEQ CORPORATION and used only for the specify purpose authorised by ZEETEQ		6065.SMA.JSF.00.110		SCALE				
						5:1		DO NOT SCALE DRAWING				
						A4		SIZE				
						1 of 1		SHEET				
								REV.				
								S1				