

DATA SHEET

Receptacle connector



Part Number

6033.SMA.JSF.00.110

Description

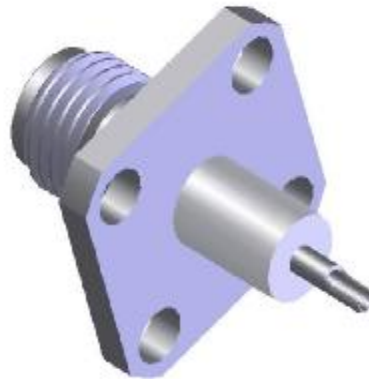
SMA, Jack, Straight, Flange Mount

Interface Standard

IEC 60169-15

Suitable Cable

N/A



Electrical Data

Impedance	50	Ω		
Max. operating frequency	18	GHz		
Frequency range	DC to 1GHz	1 to 2.2GHz	2.2 to 3GHz	3 to 6GHz
VSWR	≤ 1.06	≤ 1.08	≤ 1.08	≤ 1.15
Insertion loss	$0.03 \sqrt{f(\text{GHz})}$	dB		
Insulation resistance	≥ 5000	M Ω		
Center contact resistance	≤ 3	m Ω		
Outer contact resistance	≤ 2.5	m Ω		
Dielectric withstanding voltage	≥ 1000	Vrms @ 50Hz		
Working voltage	≥ 480	Vrms @ 50Hz		

Mechanical Data

Mating cycles	≥ 500	
coupling recommended toque	$\geq 0.8 \sim 1.1$	Nm
coupling proof torque	≥ 1.7	Nm
coupling nut tensile strength	≥ 270	N
Center contact axial force	≥ 27	N
Center contact axial torque	≥ 0.03	Nm
contact gauge ret. Force	≥ 0.28	N

Environmental Data

Operating temperature	-55~155 $^{\circ}\text{C}$	connector limited
2002/95/EC (ROHS)	compliant	
Sealing	N/A	
Thermal shock	MIL-STD-202 Method107, condition B	
Moisture resistance	MIL-STD-202 Method106	
Corrosion resistance	MIL-STD-202 Method101, condition B	
Vibration	MIL-STD-202 Method204, condition D	
Shock	MIL-STD-202 Method213, condition I	

Material Data

Piece Parts	Material	Surface Plating
center contact	Beryllium copper	Au
body	Brass	Au
insulator	PTFE	