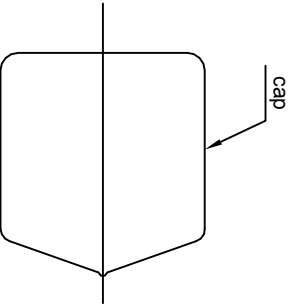
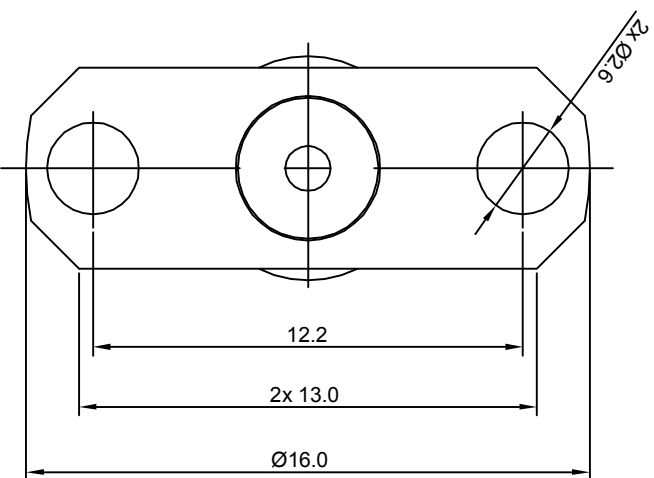
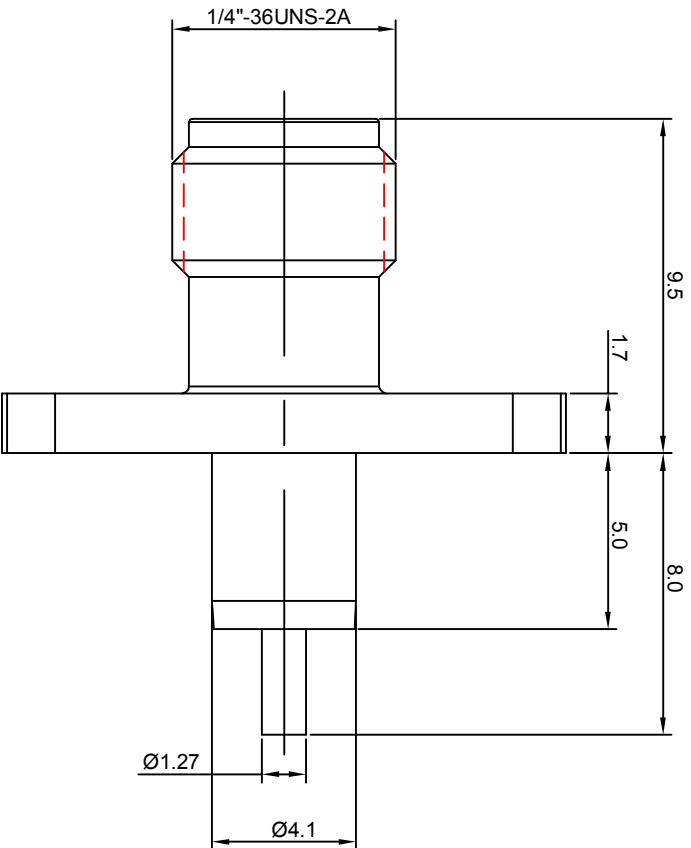


NOTES: (UNLESS OTHERWISE SPECIFIED)

1. Interface comply with IEC 169-15.
2. Part must be packaged to avoid any damages during transportation.



REV.	DESCRIPTION	APPROVED	DATE	ECN

MATERIAL SEE BOM FOR DETAILS	
FINISH SEE BOM FOR DETAILS	
Plating part to be touched by gloves	
Dimension apply before plating	
XXX - measuring point for plating	
SURFACE	VOLUME

TOLERANCES	
Optical	X ±1
1place	.X ±0.1
2place	.XX ±0.05
Angle	±5°
Remove burrs and sharp edges	
	-0.2
	+0.2

THIRD ANGLE PROJECTION	
GENERAL ECCENTRICITY	<input checked="" type="checkbox"/> 0.06
DRAWN BY	Joy Zhou
CHECKED BY	
APPROVED BY	
NAME	DATE
	16Aug07

NOTICE: Those drawings and specifications are the property of ZEETEQ CORPORATION and used only for the specific purpose authorised by ZEETEQ

TITLE		Zee-teq	
SMA, JACK, FLANGE			
DWG. NO.	6041.SMA.JSF.00.110	REV.	S1
SCALE	5:1	DO NOT SCALE DRAWING	SIZE A4
SHEET		1 of 1	