

1

2

3

4

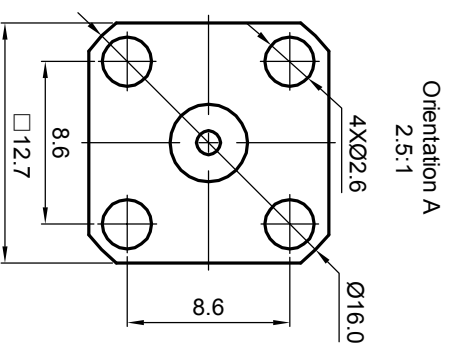
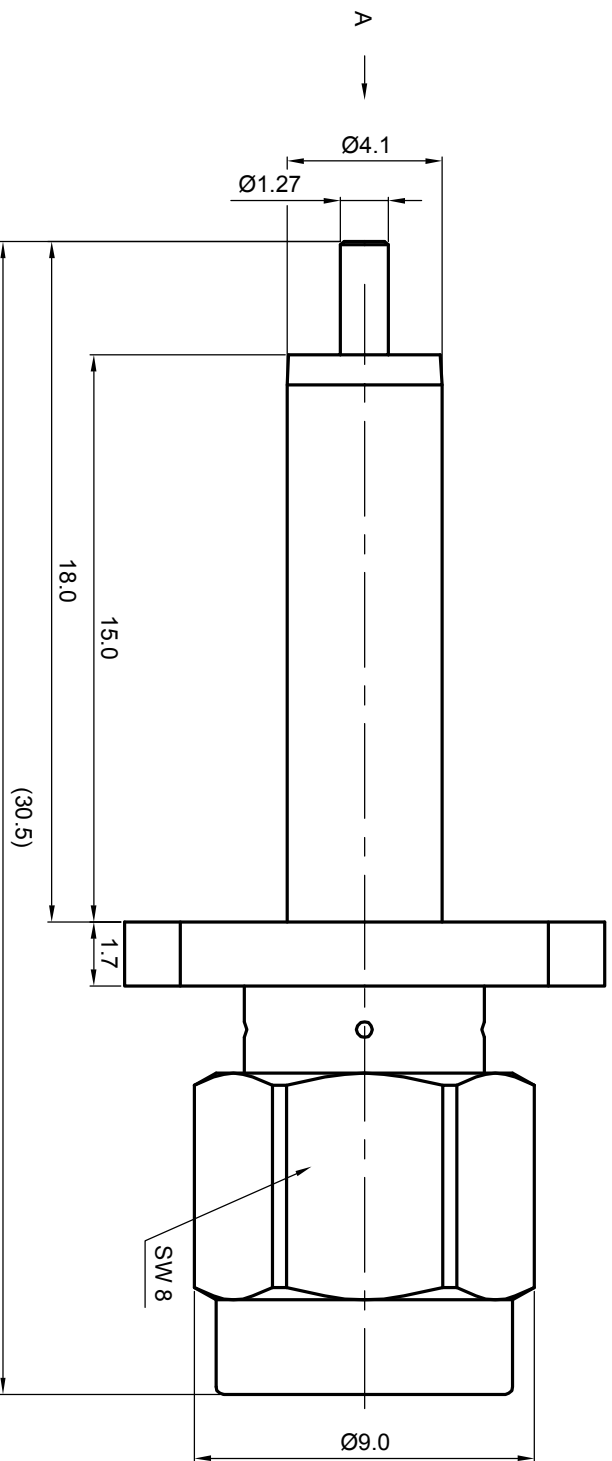
5

6

**NOTES: (UNLESS OTHERWISE SPECIFIED)**

- 1. Interface comply with IEC 169-15.
- 2. Part must be packaged to avoid any damaged during transportation.

REV.	DESCRIPTION	APPROVED	DATE	ECN



MATERIAL		SEE BOM OF DETAILS		TOLERANCES		THIRD ANGLE PROJECTION	
SEE BOM OF DETAILS		SEE BOM OF DETAILS		Opface X ±1 1place X ±0.1 2place .XX ±0.05 Angle ±5°			
FINISH		SEE BOM OF DETAILS		Remove burrs and sharp edges		GENERAL ECCENTRICITY <input checked="" type="checkbox"/> 0,06	
Plating part to be touched by gloves		SEE BOM OF DETAILS		-0.2 +0.2		DRAWN BY NAME DATE	
Dimension apply before plating		SEE BOM OF DETAILS		-0.2 +0.2		Billy.Lei 27 Dec 07	
XXX - measuring point for plating		SEE BOM OF DETAILS		APPROVED BY		CHECKED BY	
SURFACE		VOLUME		APPROVED BY		APPROVED BY	

TITLE				SCALE		SIZE		SHEET	
SMA, plug, flange				5:1		A4		1 OF 1	
DWG NO.				REV.		DO NOT SCALE DRAWING		SHEET	
5978.SMA.PSF.00.111				S1		DO NOT SCALE DRAWING		1 OF 1	



A B C D 1 2 3 4 5 6