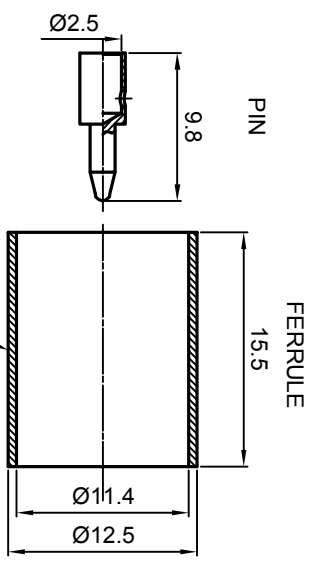
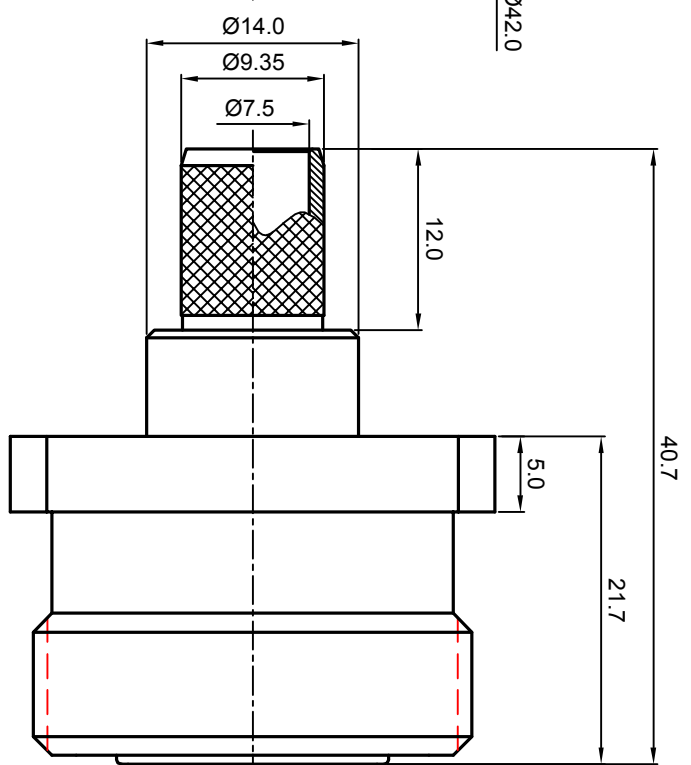
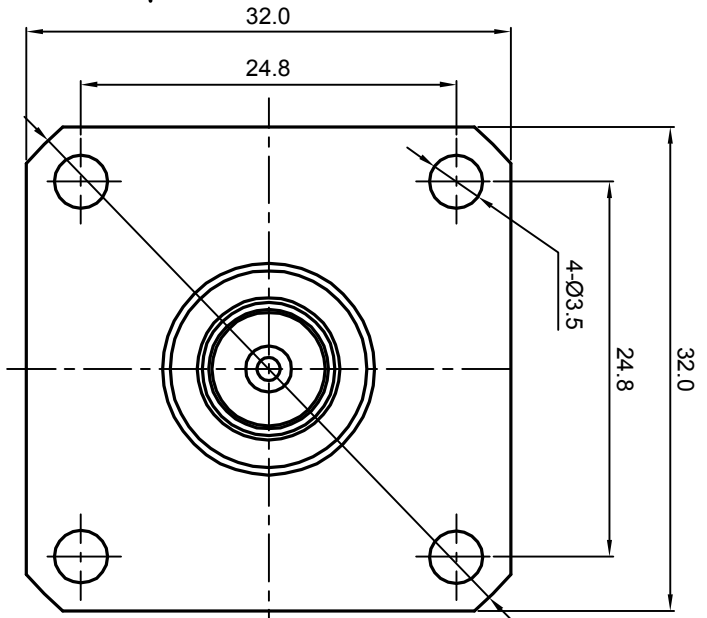
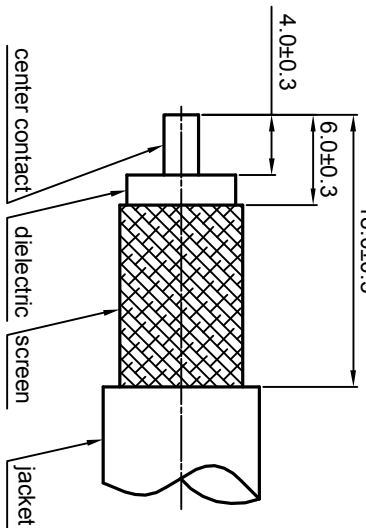


NOTES: (UNLESS OTHERWISE SPECIFIED)

1. The interface comply with IEC169-4
 2. Part must be packaged to avoid any damaged during transportation
- ⚠ After crimping dimension should be AF/SW 10.9.



RECOMMENDED CABLE STRIPPING DIMENSIONS
18.0±0.3



REV.	DESCRIPTION	APPROVED	DATE	ECN
A	REL. TO PRODUCTION	Johnny	23Jan08	

MATERIAL		SEE BOM FOR DETAILS		TOLERANCES		THIRD ANGLE PROJECTION	
FINISH		SEE BOM FOR DETAILS		Opface X ±1 1place X ±0.1 2place XX ±0.05 Angle ±5°			
Dimension apply before plating		Remove burrs and sharp edges		-0.2 +0.2		GENERAL ECCENTRICITY <input checked="" type="checkbox"/> 0.06	
Plating part to be touched by gloves		DRAWN BY		NAME		DATE	
XXX - measuring point for plating		Danny		Colin		26OCT07	
SURFACE		CHECKED BY		APPROVED BY		DATE	
VOLUME		Johnny		23Jan08		23Jan08	

TITLE				DWG. NO.		SCALE	
7/16, JACK, CABLE MOUNT				5085.716.JSC.12.233		2:1	
				REV.		DO NOT SCALE DRAWING	
1.6				A		SIZE	
				A4		SHEET	
				1 of 1			