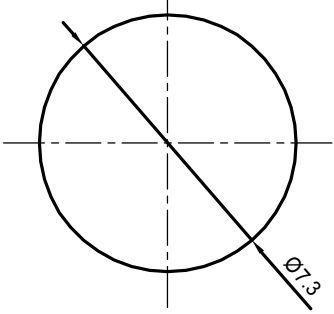
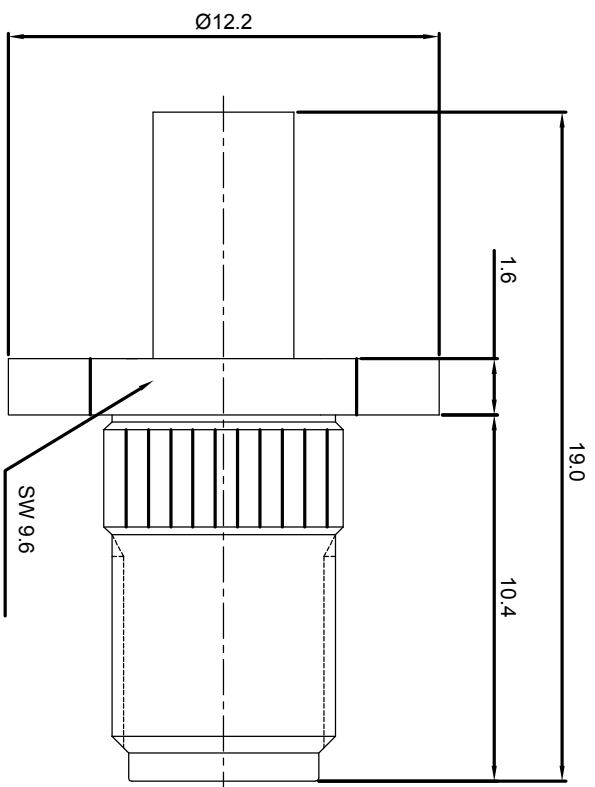


REV.	DESCRIPTION	APPROVED	DATE	ECN

**NOTES: (UNLESS OTHERWISE SPECIFIED)**

- Interface comply with IEC 169-15.
- Part must be packaged to avoid any damaged during transportation.



Recommended mounting hole



MATERIAL		TOLERANCES		THIRD ANGLE PROJECTION		TITLE	
SEE BOM OF DETAILS		Optance X ±1 1place X ±0.1 2place .XX ±0.05 Angle ±5°				<b>Zeeteq</b>	
SEE BOM OF DETAILS		Remove burrs and sharp edges 		GENERAL ECCENTRICITY <input checked="" type="checkbox"/> 0.06		<b>SMA, Jack, cable</b>	
FINISH		DRAWN BY		NAME		DATE	
Plating part to be touched by gloves		Joy Zhou		Joy Zhou		20 Nov 07	
SURFACE		CHECKED BY		APPROVED BY		DWG NO.	
VOLUME		APPROVED BY		APPROVED BY		5172.SMA.JSC.06.110	
NOTICE: Those drawings and specifications are the property of ZEETEQ CORPORATION and used only for the specify purpose authorised by ZEETEQ		SCALE		DO NOT SCALE DRAWING		SIZE	
		5:1				A4	
						SHEET	
						1 of 1	
						REV.	
						S1	

