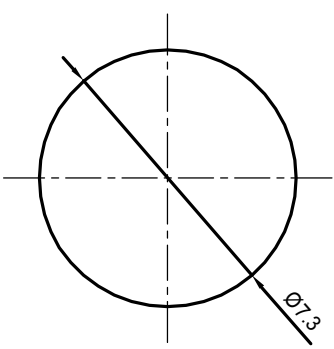
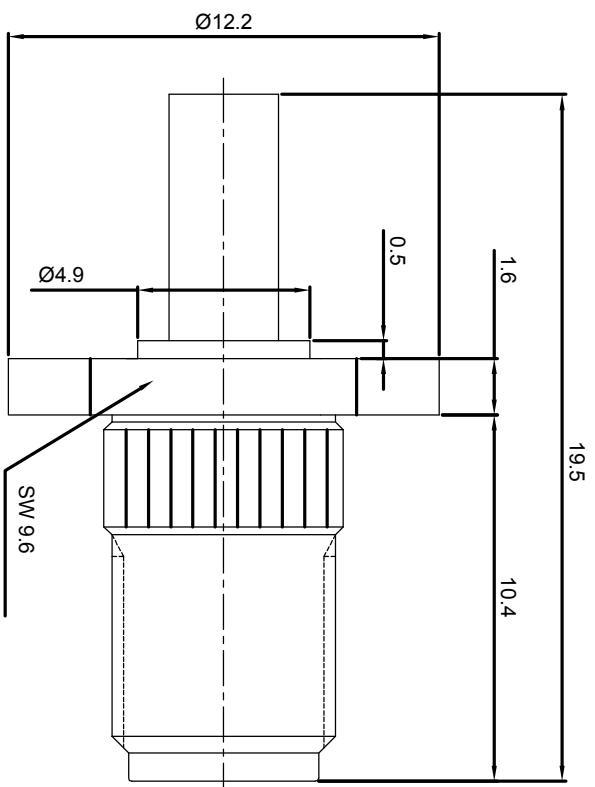


REV.	DESCRIPTION	APPROVED	DATE	ECN

- NOTES: (UNLESS OTHERWISE SPECIFIED)**
- Interface comply with IEC 169-15.
 - Part must be packaged to avoid any damaged during transportation.



Recommended mounting hole



MATERIAL		TOLERANCES		THIRD ANGLE PROJECTION		TITLE	
SEE BOM OF DETAILS		Oplate X ±1 1place X ±0.1 2place .XX ±0.05 Angle ±5°				Zeeteq SMA, Jack, cable	
SEE BOM OF DETAILS		Remove burrs and sharp edges 		GENERAL ECCENTRICITY <input checked="" type="checkbox"/> 0.06		DWG. NO. 5171.SMA.JSC.05.110	
FINISH		DRAWN BY		NAME		DATE	
Plating part to be touched by gloves		Joy Zhou		Joy Zhou		20 Nov 07	
SURFACE		CHECKED BY		APPROVED BY		REV.	
VOLUME						S1	
NOTICE: Those drawings and specifications are the property of ZEETEQ CORPORATION and used only for the specify purpose authorised by ZEETEQ		SCALE		DO NOT SCALE DRAWING		SHEET	
		5:1				1 of 1	

