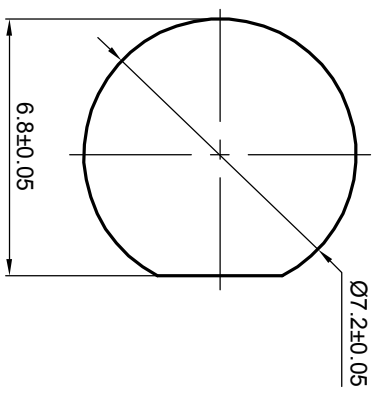


**NOTES: (UNLESS OTHERWISE SPECIFIED)**

- Interface comply with IEC 169-15.
  - Part must be packaged to avoid any damaged during transportation.
- After crimping dimension should be AFS/SW 5.41.

Mounting hole

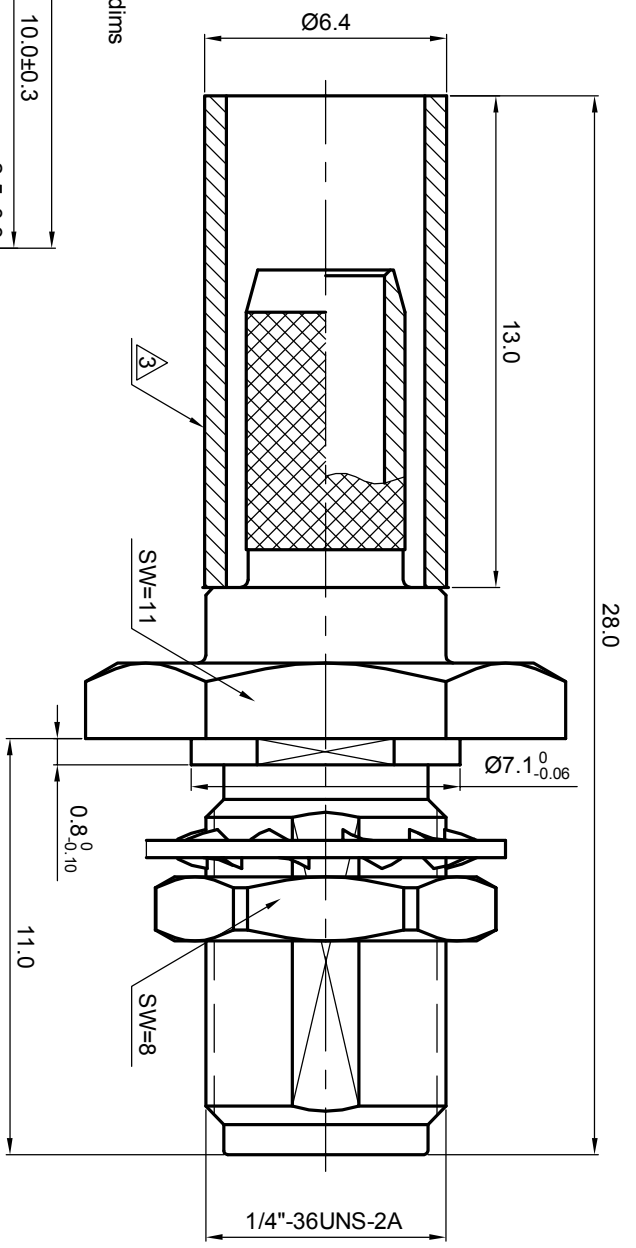
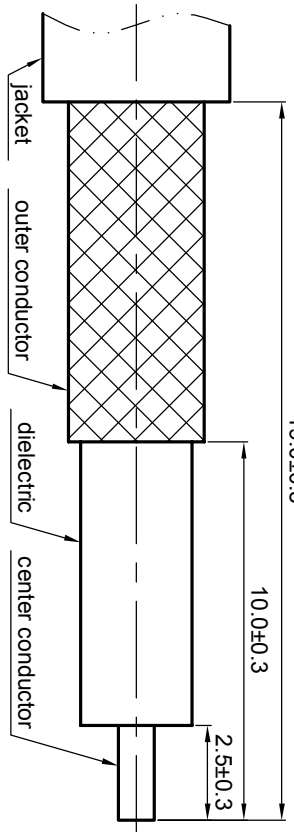


Recommended cable stripping dirms

19.0±0.3

10.0±0.3

2.5±0.3



REV.	DESCRIPTION	APPROVED	DATE	ECN
A	REL. TO PRODUCTION	Johnny	21 Nov 07	

MATERIAL		SEE BOM OF DETAILS		TOLERANCES		THIRD ANGLE PROJECTION									
SEE BOM OF DETAILS		SEE BOM OF DETAILS		Oplice X ±1 1place X ±0.1 2place .XX ±0.05 Angle ±5°		GENERAL ECCENTRICITY <input checked="" type="checkbox"/> 0.06									
FINISH		SEE BOM OF DETAILS		Remove burrs and sharp edges -0.2 -0.2		<table border="1"> <tr> <th>NAME</th> <th>DATE</th> </tr> <tr> <td>DRAWN BY</td> <td>Billy.Lei</td> </tr> <tr> <td>CHECKED BY</td> <td>Joy</td> </tr> <tr> <td>APPROVED BY</td> <td>Johnny</td> </tr> </table>		NAME	DATE	DRAWN BY	Billy.Lei	CHECKED BY	Joy	APPROVED BY	Johnny
NAME	DATE														
DRAWN BY	Billy.Lei														
CHECKED BY	Joy														
APPROVED BY	Johnny														
SURFACE		VOLUME		NOTICE: Those drawings and specifications are the property of ZEETEQ CORPORATION and used only for the specify purpose authorised by ZEETEQ.											
Plating part to be touched by gloves															

				TITLE	
SMA, Jack, cable				5027.SMA.JSC.08.111	
DWG NO.				REV.	
5027.SMA.JSC.08.111				A	
SCALE		DO NOT SCALE DRAWING		SIZE	
5:1				A4	
				SHEET	
				1 of 1	