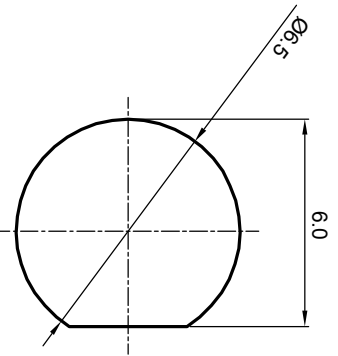
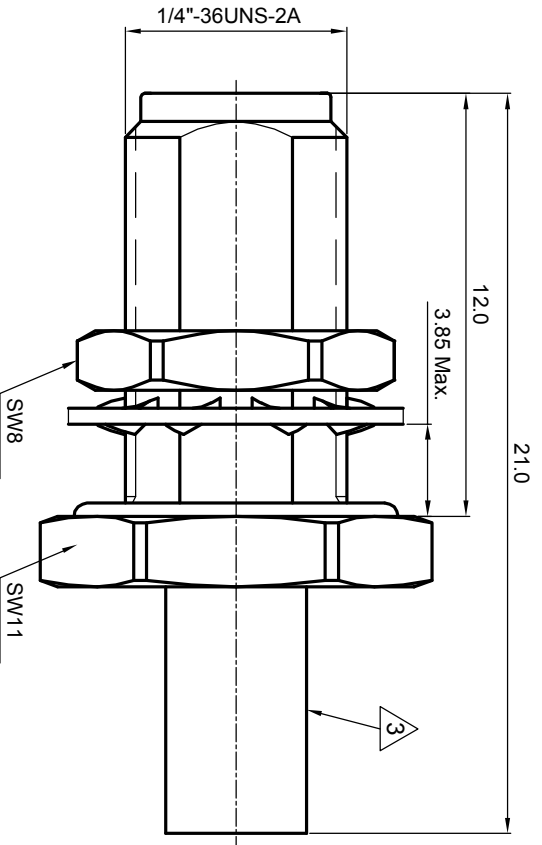


NOTES: (UNLESS OTHERWISE SPECIFIED)

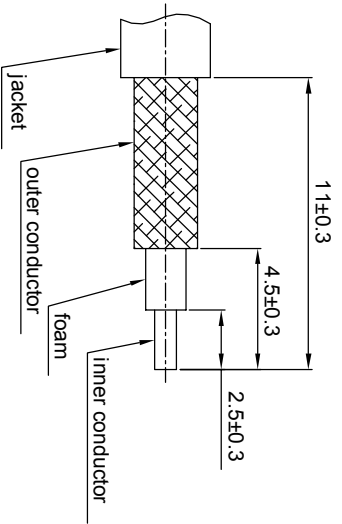
1. Interface comply with IEC 169-15.
2. Part must be packaged to avoid any damages during transportation.
3. After crimping dimension should be AF/SW 3.25.



recommended hole dims



recommended cable stripping dims



REV.	DESCRIPTION	APPROVED	DATE	ECN

MATERIAL		THIRD ANGLE PROJECTION		TITLE	
SEE BOM				Zeeteq	
FINISH		GENERAL ECCENTRICITY		DWG NO.	
SEE BOM		<input checked="" type="checkbox"/> 0.06		5177.SMA.JSC.07.111	
TOLERANCES		DRAWN BY		REV.	
Oplate X ±1 1place X ±0.1 2place .XX ±0.05 Angle ±5°		Joy Zhou		S1	
Remove burrs and sharp edges		CHECKED BY		SCALE	
		APPROVED BY		8:1	
Plating part to be touched by gloves		DATE		DO NOT SCALE DRAWING	
Dimension apply before plating		25Oct07		SIZE	
XXX - measuring point for plating				A4	
SURFACE		NOTICE: Those drawings and specifications are the property of ZEETEQ CORPORATION and used only for the specify purpose authorised by ZEETEQ		SHEET	
VOLUME				1 of 1	

1.6