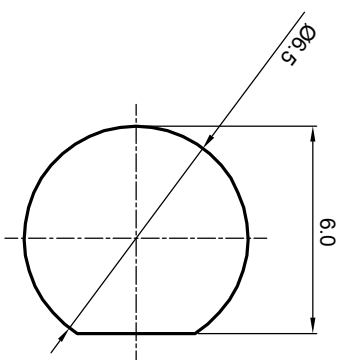


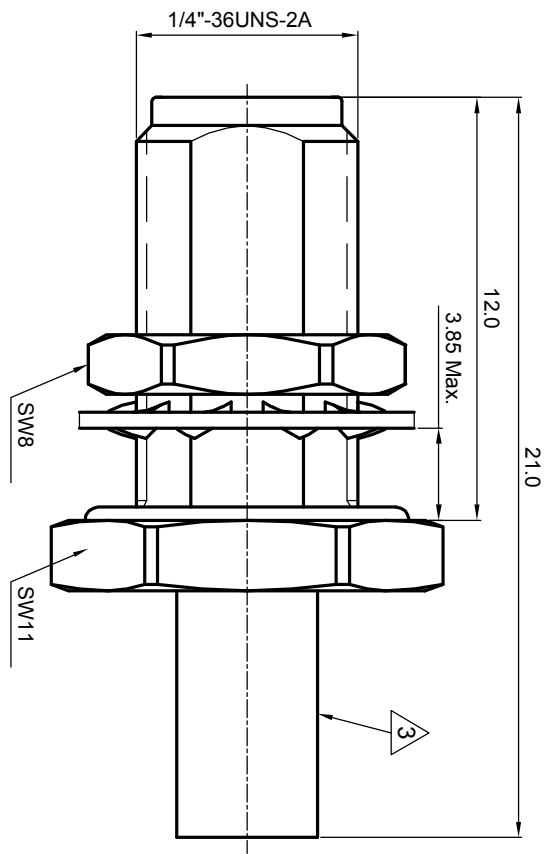
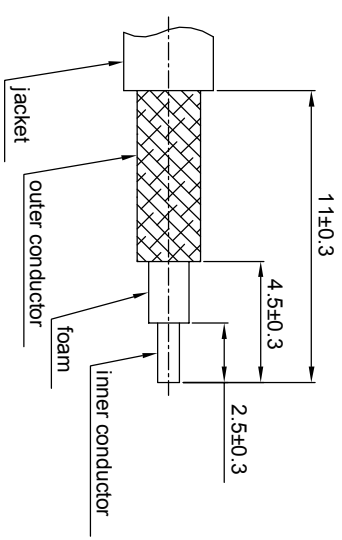
NOTES: (UNLESS OTHERWISE SPECIFIED)

1. Interface comply with IEC 169-15.
2. Part must be packaged to avoid any damages during transportation.
3. After crimping dimension should be AF/SW 3.25.



recommended hole dims

recommended cable stripping dims



REV.	DESCRIPTION	APPROVED	DATE	ECN

MATERIAL		SEE BOM		TOLERANCES		THIRD ANGLE PROJECTION		TITLE	
FINISH		SEE BOM		Optical X ±1 1place X ±0.1 2place .XX ±0.05 Angle ±5°		GENERAL ECCENTRICITY <input checked="" type="checkbox"/> 0.06		Zeeteq	
SURFACE		SEE BOM		Remove burrs and sharp edges		DRAWN BY Joy Zhou		SMA, JACK, CABLE	
VOLUME		SEE BOM		±0.1		CHECKED BY		DWG NO. 5176.SMA.JSC.06.111	
				+0.1		APPROVED BY		SCALE 8:1	
								DO NOT SCALE DRAWING	
								SIZE A4	
								SHEET 1 of 1	
								REV. S1	

