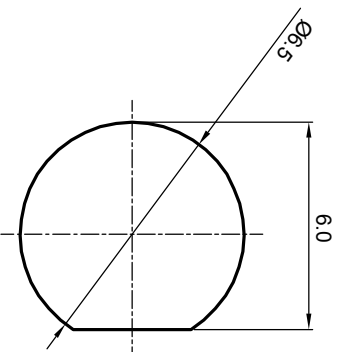
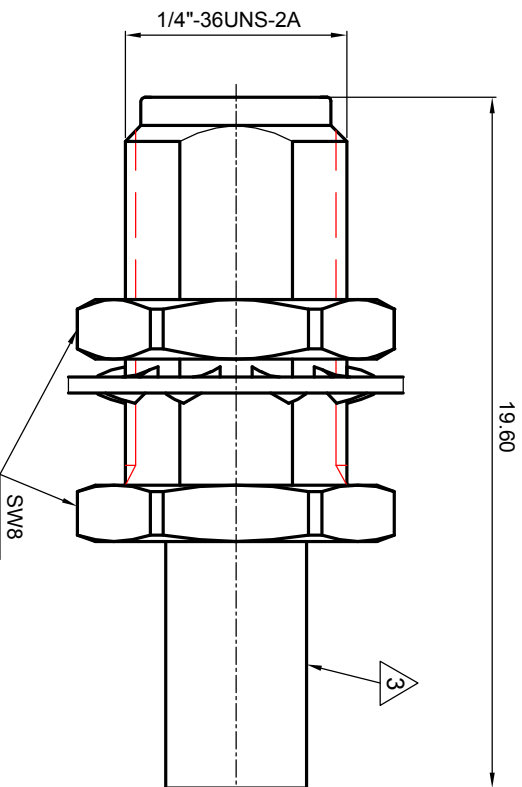


**NOTES: (UNLESS OTHERWISE SPECIFIED)**

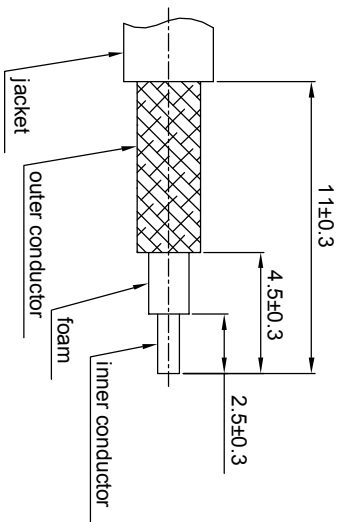
1. Interface comply with IEC 169-15.
2. Part must be packaged to avoid any damages during transportation.
3. After crimping dimension should be Af/SW 3.25.



recommended hole dims



recommended cable stripping dims



REV.	DESCRIPTION	APPROVED	DATE	ECN
A	Rel to production	Johnny	22Nov07	

MATERIAL		THIRD ANGLE PROJECTION		TITLE	
SEE BOM					
FINISH		TOLERANCES		DWG NO.	
SEE BOM		Optance X ±1 1place X ±0.1 2place .XX ±0.05 Angle ±5°		5025.SMA.JSC.06.111	
Plating part to be touched by gloves		Remove burrs and sharp edges		REV.	
Dimension apply before plating				A	
XXX - measuring point for plating		DRAWN BY		SCALE	
		Joy Zhou		8:1	
SURFACE		CHECKED BY		DO NOT SCALE DRAWING	
		Billy Lei		SIZE	
VOLUME		APPROVED BY		A4	
		Johnny		SHEET	
		22Nov07		1 of 1	
NOTICE: Those drawings and specifications are the property of ZEETEQ CORPORATION and used only for the specify purpose authorised by ZEETEQ					

1.6