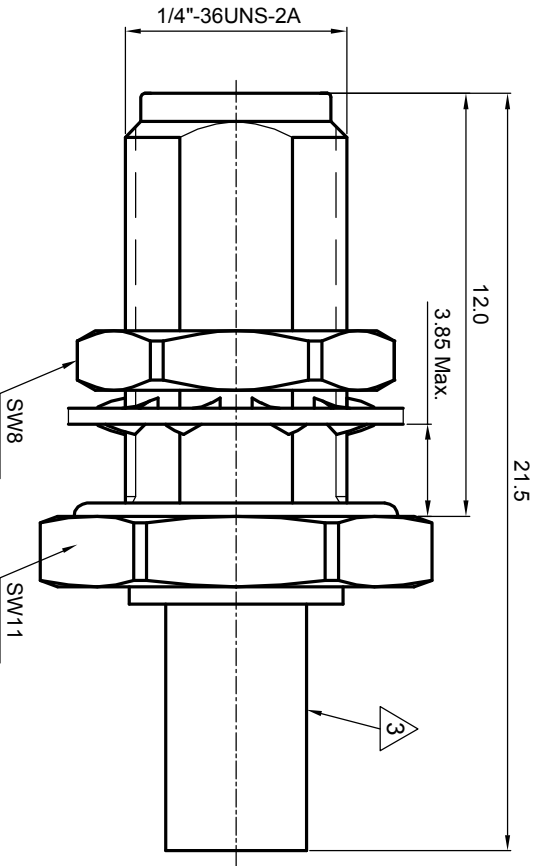
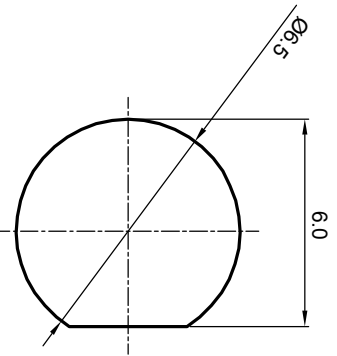
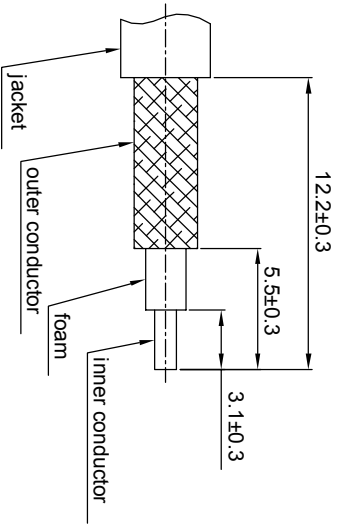


NOTES: (UNLESS OTHERWISE SPECIFIED)

1. Interface comply with IEC 169-15.
2. Part must be packaged to avoid any damages during transportation.
3. After crimping dimension should be AF/SW 3.25.



recommended cable stripping dims



REV.	DESCRIPTION	APPROVED	DATE	ECN

MATERIAL		TOLERANCES		THIRD ANGLE PROJECTION		TITLE	
SEE BOM		Optical X ±1 1place X ±0.1 2place .XX ±0.05 Angle ±5°				<h1 style="text-align: center;">Zeeteq</h1>	
FINISH		Remove burrs and sharp edges		GENERAL ECCENTRICITY $\sqrt{1}$ 0.06		SMA, JACK, CABLE	
SEE BOM				DRAWN BY Joy Zhou		DWG NO. 5175.SMA.JSC.05.111	
Plating part to be touched by gloves				CHECKED BY		SCALE 8:1	
Dimension apply before plating				APPROVED BY		DO NOT SCALE DRAWING	
XXX - measuring point for plating		NOTICE: Those drawings and specifications are the property of ZEETEQ CORPORATION and used only for the specify purpose authorised by ZEETEQ		NAME		SIZE A4	
SURFACE		VOLUME		DATE 25Oct07		SHEET 1 of 1	
						REV. S1	

