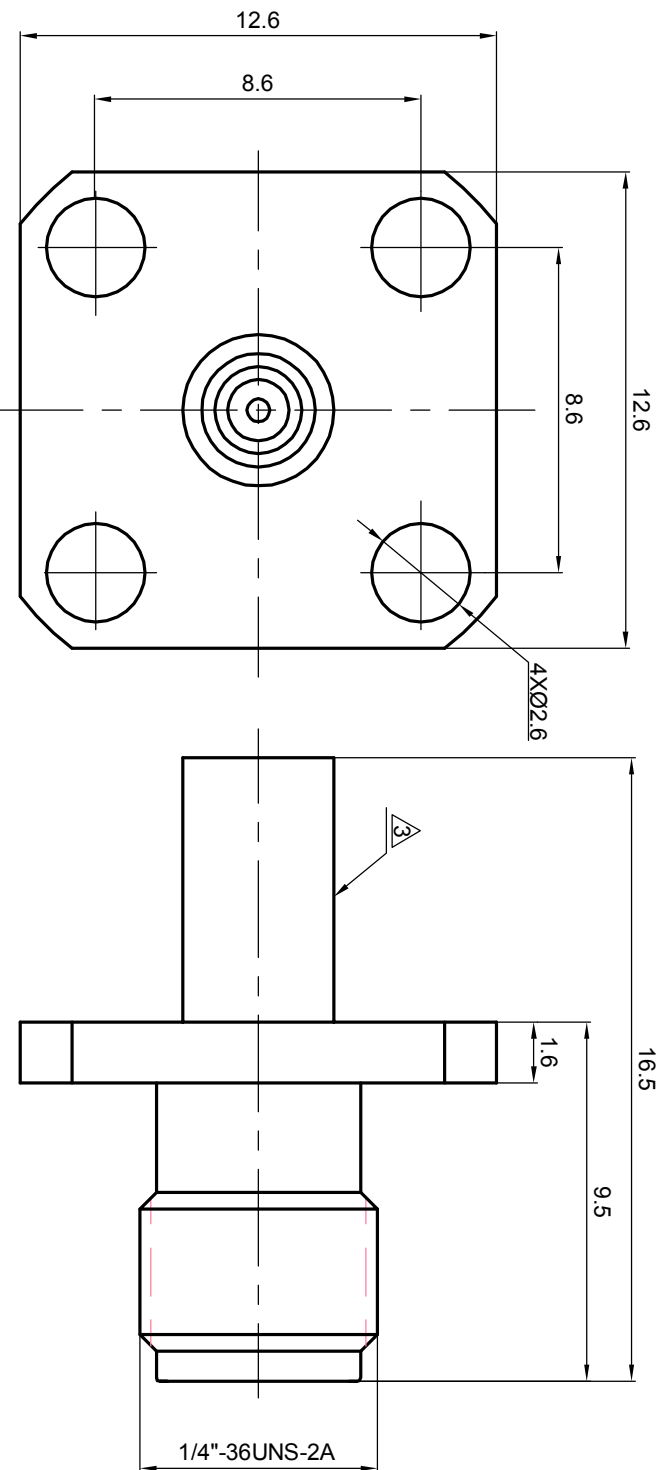


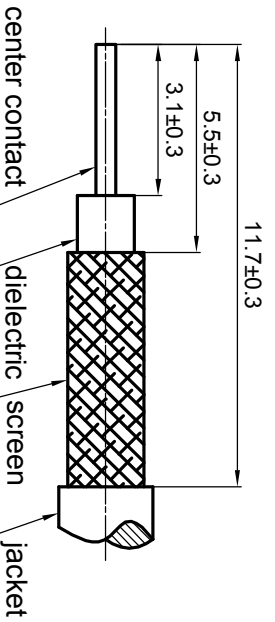
**NOTES: (UNLESS OTHERWISE SPECIFIED)**

1. Interface comply with IEC 169-15.
2. Part must be packaged to avoid any damaged during transportation.

**A** After crimping dimension should be A/FSW 3.25.



**RECOMMENDED CABLE STRIPPING DIMENSIONS**



REV.	DESCRIPTION	APPROVED	DATE	ECN

MATERIAL		THIRD ANGLE PROJECTION		TITLE	
SEE BOM OF DETAILS		GENERAL ECCENTRICITY $\sqrt{\text{A}}$ 0.06		SMA, JACK, CABLE	
SEE BOM OF DETAILS		DRAWN BY: Danny.D20Nov07		DWG NO. 5167.SMA.JSC.06.111	
FINISH		CHECKED BY		SCALE 5:1	
SEE BOM OF DETAILS		APPROVED BY		DO NOT SCALE DRAWING	
Plating part to be touched by gloves		NAME		SIZE A4	
Dimension apply before plating		DATE		SHEET 1 of 1	
XXX - measuring point for plating		DATE		REV. S1	
SURFACE		APPROVED BY			
VOLUME					
NOTICE: Those drawings and specifications are the property of ZEETEQ CORPORATION and used only for the specify purpose authorised by ZEETEQ.					



1 2 3 4 5 6