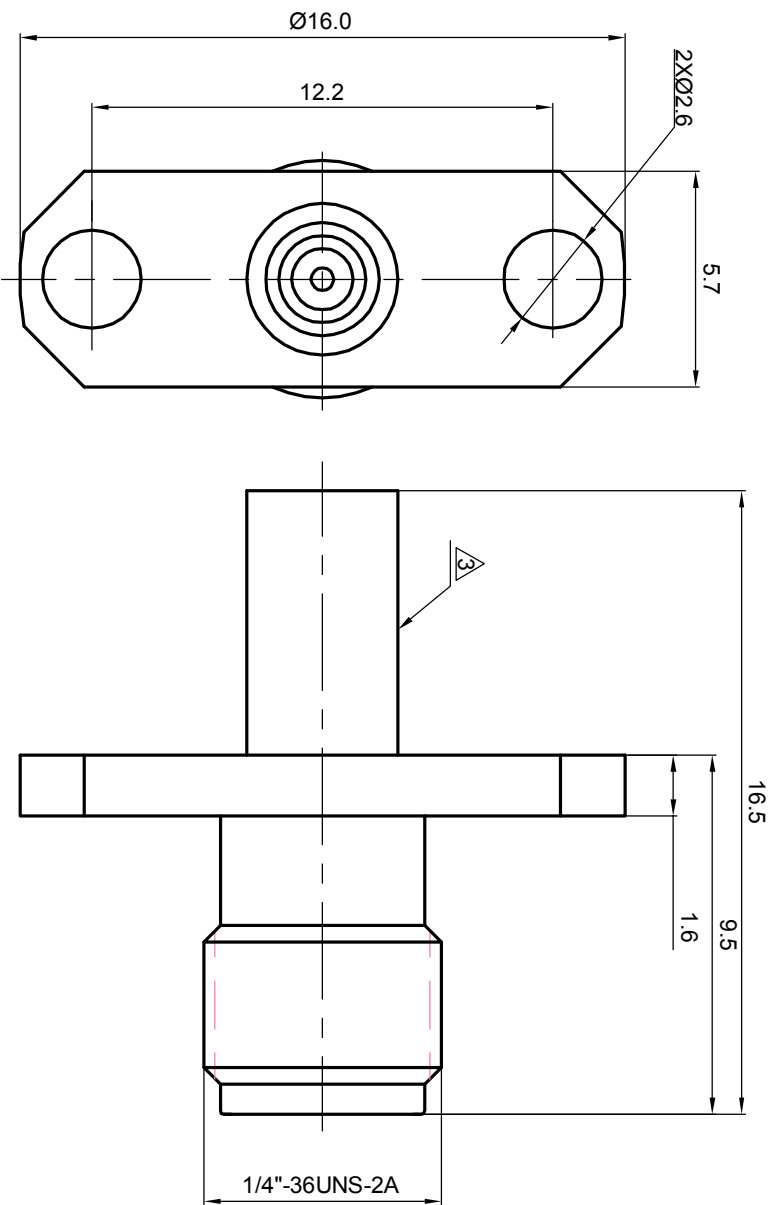
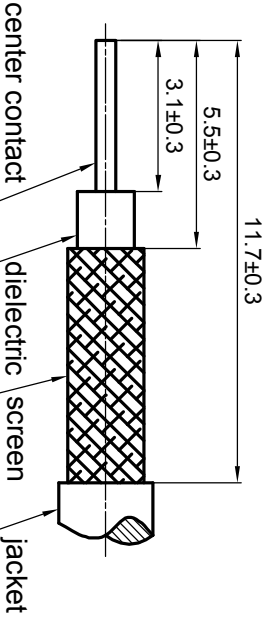


NOTES: (UNLESS OTHERWISE SPECIFIED)

1. Interface comply with IEC 169-15.
 2. Part must be packaged to avoid any damaged during transportation.
- ⚠ After crimping dimension should be AFSW 3.25.



RECOMMENDED CABLE STRIPPING DIMENSIONS



REV.	DESCRIPTION	APPROVED	DATE	ECN

MATERIAL		SEE BOM OF DETAILS		TOLERANCES		THIRD ANGLE PROJECTION		TITLE	
SEE BOM OF DETAILS		SEE BOM OF DETAILS		Opface X ±1 1place X ±0.1 2place .XX ±0.05 Angle ±5°		GENERAL ECCENTRICITY <input checked="" type="checkbox"/> 0.06		Zee teq SMA, JACK, CABLE	
FINISH		REMOVE BURRS AND SHARP EDGES		-0.2 +0.2		DRAWN BY		DWG NO.	
SEE BOM OF DETAILS		Remove burrs and sharp edges		-0.2 +0.2		DANNY.D20NOV07		5165.SMA.JSC.07.111	
Plating part to be touched by gloves		APPROVED BY		<input checked="" type="checkbox"/> 0.06		CHECKED BY		REV.	
Dimension apply before plating		APPROVED BY		<input checked="" type="checkbox"/> 0.06		APPROVED BY		S1	
XXX - measuring point for plating		APPROVED BY		<input checked="" type="checkbox"/> 0.06		APPROVED BY		SCALE	
SURFACE		APPROVED BY		<input checked="" type="checkbox"/> 0.06		APPROVED BY		5:1	
VOLUME		APPROVED BY		<input checked="" type="checkbox"/> 0.06		APPROVED BY		DO NOT SCALE DRAWING	
SURFACE		APPROVED BY		<input checked="" type="checkbox"/> 0.06		APPROVED BY		SIZE	
VOLUME		APPROVED BY		<input checked="" type="checkbox"/> 0.06		APPROVED BY		A4	
SURFACE		APPROVED BY		<input checked="" type="checkbox"/> 0.06		APPROVED BY		SHEET	
VOLUME		APPROVED BY		<input checked="" type="checkbox"/> 0.06		APPROVED BY		1 OF 1	

1 2 3 4 5 6

