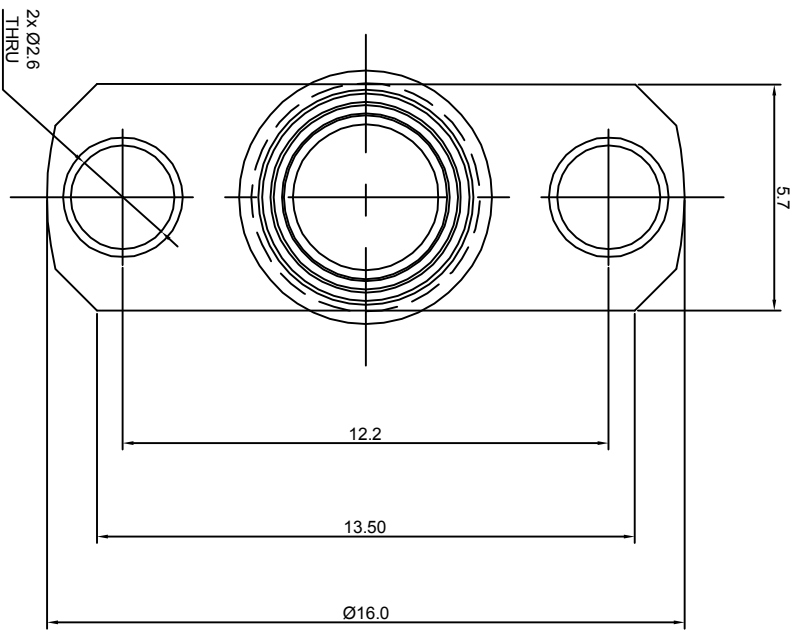
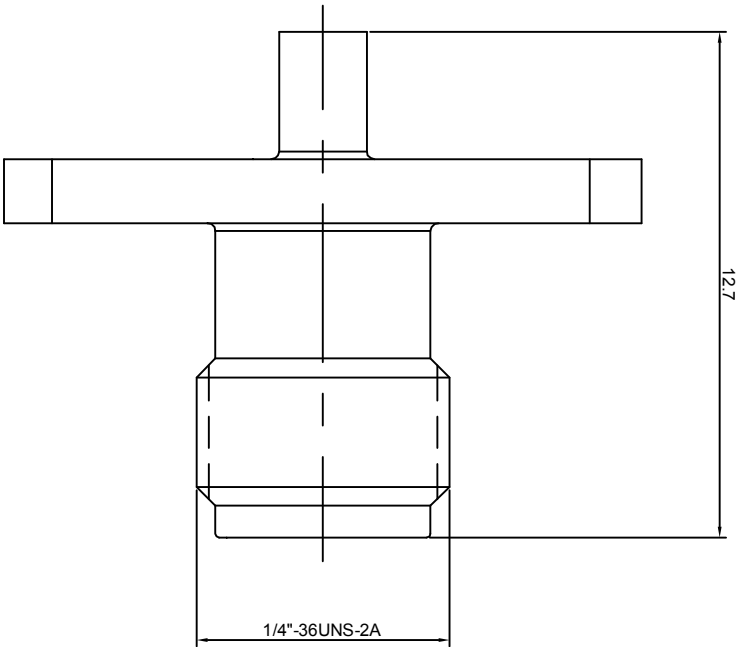
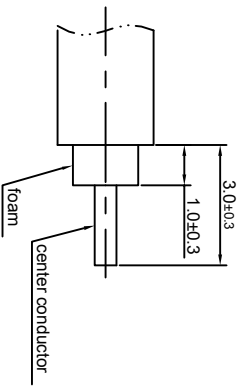


- NOTES: (UNLESS OTHERWISE SPECIFIED)**
1. INTERFACE COMPLY WITH IEC 169-15.
 2. PART MUST BE PACKAGED TO AVOID ANY DAMAGES DURING TRANSPORTATION.



RECOMMENDED CABLE STRIPPING DIMENSIONS



REV.	DESCRIPTION	APPROVED	DATE	ENCL

MATERIAL SEE BOM FOR DETAILS		TOLERANCES 1place X ±1 2place X ±0.1 3place XX ±0.05 Angle 45°		THIRD ANGLE PROJECTION		Zeeteq	
FINISH SEE BOM FOR DETAILS		Remove burrs and sharp edges -0.1 -0.1		GENERAL ECCENTRICITY Ø 0.06		TITLE SMA, jack, cable mount	
Plating part to be touched by gloves Dimension apply before plating XXX - measuring part or plating		DRAWN BY Joy Zhou 25JUL07		NAME DATE		DRAWING NO. 5015.SMA.JSC.01.110	
SURFACE		CHECKED BY		APPROVED BY		SCALE 2:1	
VOLUME		NOTICE: Those drawings and specifications are the property of ZEETEQ CORPORATION and used only for the specific purpose authorised by ZEETEQ.		DO NOT SCALE DRAWING		SIDE A3	
						SHEET 1 of 1	

1:6