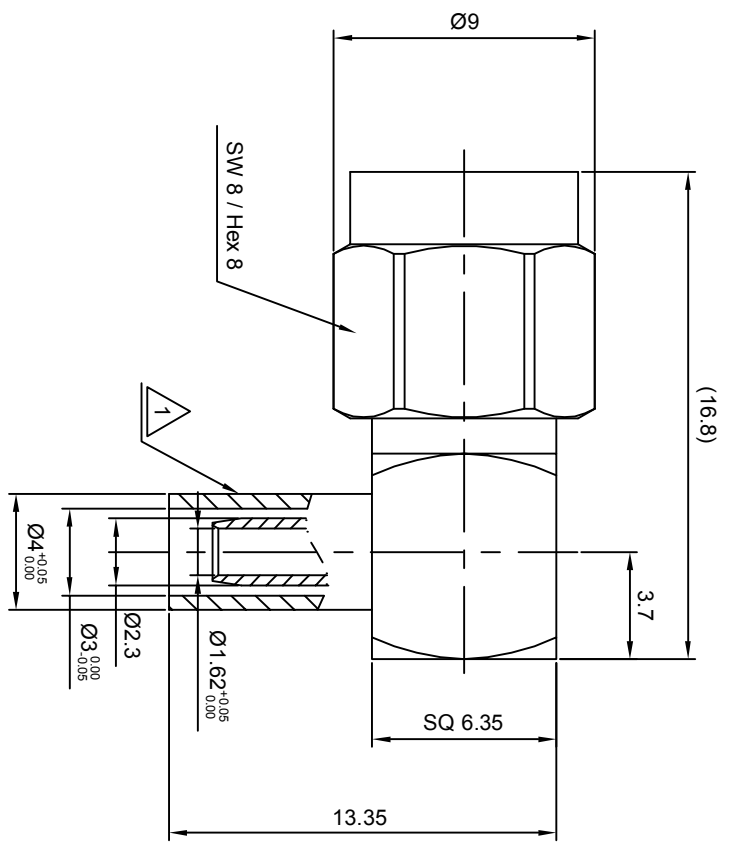
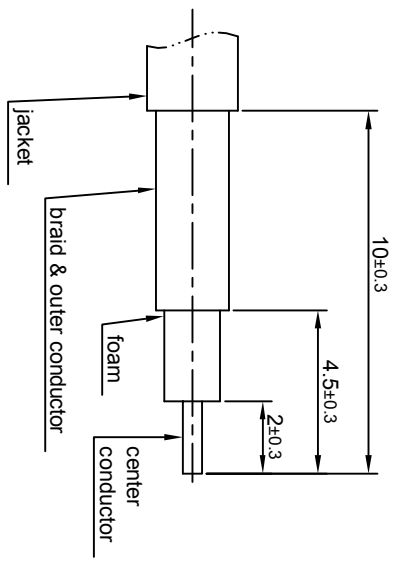


NOTES: (UNLESS OTHERWISE SPECIFIED)
 ⚠ After crimping dimension should be AF/SW 3.25



recommended cable stripping dims



MATERIAL SEE BOM		TOLERANCES		THIRD ANGLE PROJECTION	
FINISH SEE BOM		Remove burrs and sharp edges			
Plating part to be touched by gloves		Oplate X ±1 1place X ±0.1 2place XX ±0.05 Angle ±5°		GENERAL ECCENTRICITY $\sqrt{0.06}$	
Dimension apply before plating		-0.1 +0.1		DRAWN BY Joy Zhou 26Sep07 CHECKED BY Colin 15Nov07 APPROVED BY Johnny 15Nov07	
XXX - measuring point for plating		NOTICE: Those drawings and specifications are the property of ZEETEQ CORPORATION and used only for the specify purpose authorised by ZEETEQ		DWG. NO. 5011.SMA.PRC.06.111	
SURFACE		VOLUME		SCALE 4:1 DO NOT SCALE DRAWING	

Zeeteq
 SMA, plug, cable

5011.SMA.PRC.06.111
 REV. A

REV.	DESCRIPTION	APPROVED	DATE	ECN
A	REL TO PRODUCTION	Johnny	15Nov07	

1.6