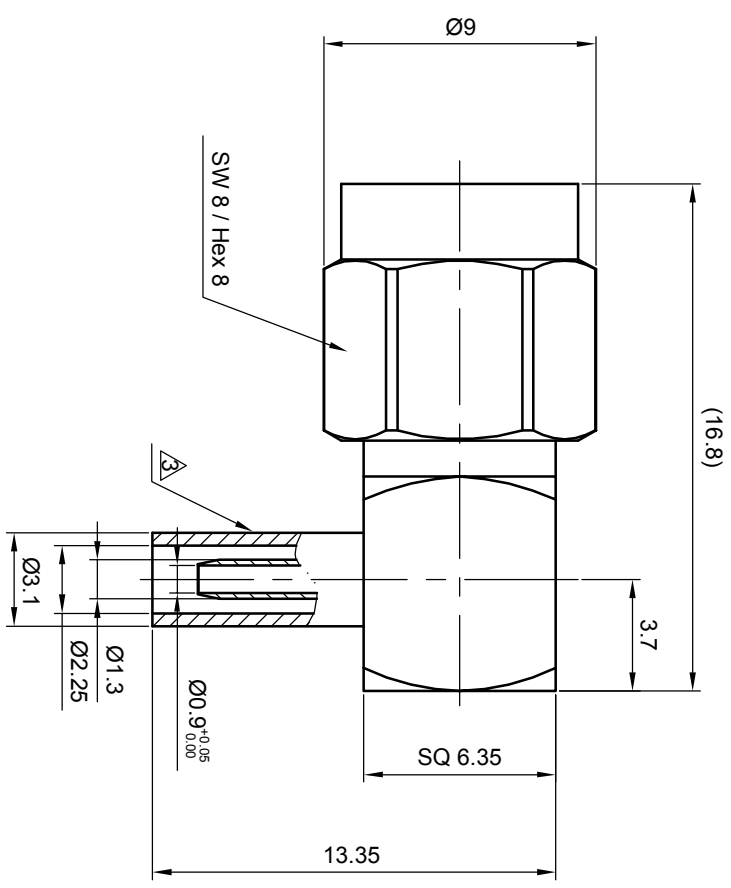


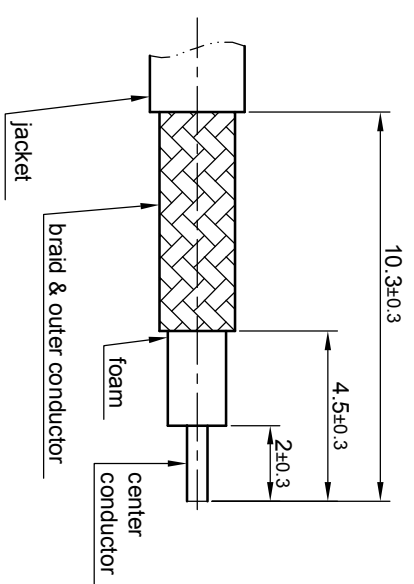
**NOTES: (UNLESS OTHERWISE SPECIFIED)**

- Interface comply with IEC 169-15.
- Part must be packaged to avoid any damaged during transportation.

⚠ After crimping dimension should be AF/SW 2.67.



recommended cable stripping dims



REV.	DESCRIPTION	APPROVED	DATE	ECN
A	Rel to production	Johnny	14Dec07	

MATERIAL	SEE BOM
FINISH	SEE BOM
Plating part to be touched by gloves	
Dimension apply before plating	
XXX - measuring point for plating	
SURFACE	VOLUME

TOLERANCES	X ±1 X ±0.1 2place XX ±0.05 Angle ±5°
Remove burrs and sharp edges	

THIRD ANGLE PROJECTION	
	GENERAL ECCENTRICITY <input checked="" type="checkbox"/> 0.06
DRAWN BY	NAME
Colin	
CHECKED BY	DATE
	23Oct07
APPROVED BY	

**NOTICE:** Those drawings and specifications are the property of ZEETEQ CORPORATION and used only for the specify purpose authorised by ZEETEQ

TITLE	<b>SMA, plug, cable</b>		
DWG. NO.	5010.SMA.PRC.05.111		
SCALE	DO NOT SCALE DRAWING	SIZE	SHEET
4:1		A4	1 of 1
REV.	A		

