

# DATA SHEET

## Cable connector



### Part Number

5006.SMA.PSC.09.141

### Description

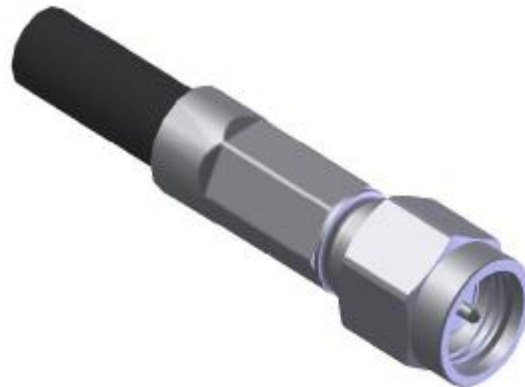
SMA, Plug, Straight, Cable

### Interface Standard

IEC 60169-15

### Suitable Cable

RG142B/U, RG223/U, RG400/U



### Electrical Data

Impedance	50	$\Omega$		
Max. operating frequency	12.4	GHz	cable limited	
Frequency range	DC to 1GHz	1 to 2.2GHz	2.2 to 3GHz	3 to 6GHz
VSWR	$\leq 1.05$	$\leq 1.07$	$\leq 1.07$	$\leq 1.15$
Insertion loss	$0.03 \sqrt{f(\text{GHz})}$	dB		
Insulation resistance	$\geq 5000$	M $\Omega$		
Center contact resistance	$\leq 3$	m $\Omega$		
Outer contact resistance	$\leq 2.5$	m $\Omega$		
Dielectric withstanding voltage	$\geq 1000$	Vrms @ 50Hz	cable limited	
Working voltage	$\leq 480$	Vrms @ 50Hz	cable limited	

### Mechanical Data

Mating cycles	$\geq 500$	
Center contact axial force	$\geq 22$	N
Center contact axial torque	$\geq 0.03$	Nm
contact gauge ret. Force	$\geq 0.28$	N
Center contact	solder	
Outer contact	crimp	
Cable retention force		
RG142B/U	$\geq 257.5$	N
RG223/U	$\geq 257.5$	N
RG400/U	$\geq 257.5$	N

### Environmental Data

Operating temperature	restricted by cable and/or silicone used
2002/95/EC (ROHS)	compliant
Sealing	N/A
Thermal shock	MIL-STD-202 Method107, condition B
Moisture resistance	MIL-STD-202 Method106
Corrosion resistance	MIL-STD-202 Method101, condition B
Vibration	MIL-STD-202 Method204, condition D
Shock	MIL-STD-202 Method213, condition I

### Material Data

Piece Parts	Material	Surface Plating
center contact	Brass	Au
nut	Stainless steel	Passivated
body	Stainless steel	Passivated
insulator	PTFE	
Ferrule	Brass	Au
O-ring	silicone rubber	

**Zeeteq** the technoledge connecting people

No. 51 Sci.-Tech Industry Park, Huoju  
Road, SND, Suzhou, China  
Zip: 215009

Tel: +86 512 6807 8808  
Fax: +86 512 6807 8818  
[www.zeeteq.com](http://www.zeeteq.com)

Rev.: a  
iussed: 2008-6-23  
page: 1 of 1