

DATA SHEET

Cable connector



Part Number

5003.SMA.PSC.06.111

Description

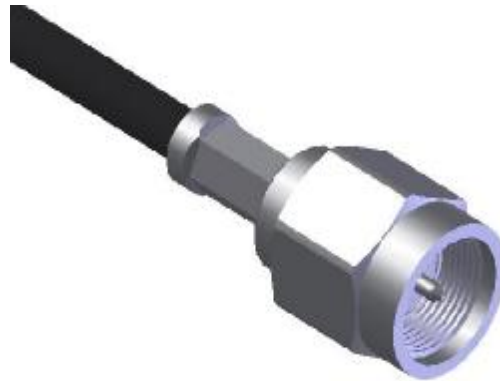
SMA, Plug, Straight, Cable Mount

Interface Standard

IEC 60169-15

Suitable Cable

RG174/U, RG188A/U, RG316/U



Electrical Data

Impedance	50	Ω	
Max. operating frequency	2.5	GHz	cable limited
Frequency range	DC to 1GHz	1 to 2.2GHz	2.2 to 2.5GHz
VSWR	≤ 1.03	≤ 1.05	≤ 1.06
Insertion loss	$0.05\sqrt{f(\text{GHz})}$	dB	
Insulation resistance	≥ 5000	M Ω	
Center contact resistance	≤ 3	m Ω	
Outer contact resistance	≤ 2.5	m Ω	
Dielectric withstanding voltage	≥ 750	Vrms @ 50Hz	cable limited
Working voltage	≥ 350	Vrms @ 50Hz	cable limited

Mechanical Data

Mating cycles	≥ 500	
Center contact axial force	≥ 22	N
Center contact axial torque	≥ 0.03	Nm
contact gauge ret. Force	≥ 0.28	N
Center contact	solder	
Outer contact	crimp	
Cable retention force		
RG174/U	≥ 43.5	N
RG188A/U	≥ 54.4	N
RG316/U	≥ 54.4	N

Environmental Data

Operating temperature	restricted by cable and/or silicone used
2002/95/EC (ROHS)	compliant
Sealing	IP68 (IEC60529)
Thermal shock	MIL-STD-202 Method107, condition B
Moisture resistance	MIL-STD-202 Method106
Corrosion resistance	MIL-STD-202 Method101, condition B
Vibration	MIL-STD-202 Method204, condition D
Shock	MIL-STD-202 Method213, condition I

Material Data

Piece Parts	Material	Surface Plating
center contact	Brass	Au
body	Brass	Au
insulator	PTFE	
nut	Brass	Au
Ferrule	Brass	Au
O-ring	silicone rubber	
spring ring	Stainless steel	

Zeeteq the technoledge connecting people

No. 51 Sci.-Tech Industry Park, Huoju
Road, SND, Suzhou, China
Zip: 215009

Tel: +86 512 6807 8808
Fax: +86 512 6807 8818
www.zeeteq.com

Rev.: a
issued: 2008-5-09
page: 1 of 1