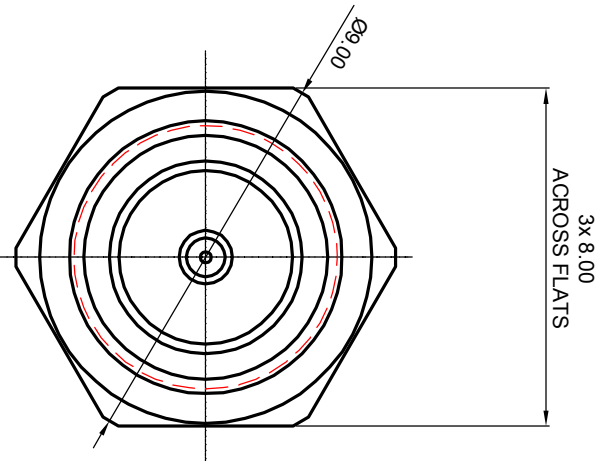
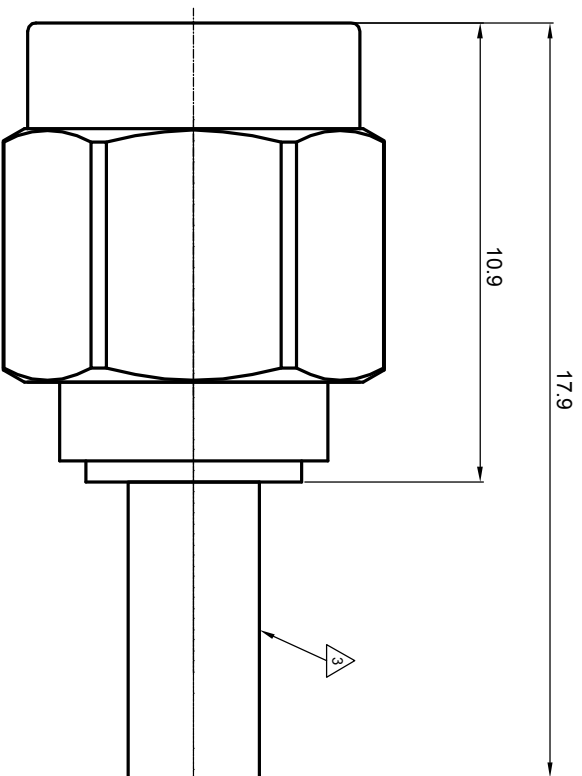
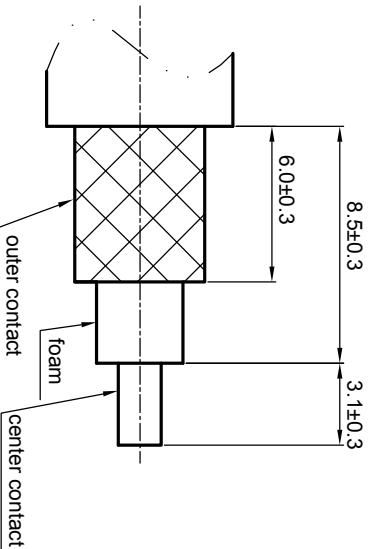


NOTES: (UNLESS OTHERWISE SPECIFIED)

1. Interface comply with IEC 169-15.
2. Part must be packaged to avoid any damages during transportation.
3. After crimping dimension should be AF/SW 2.67.



recommended cable stripping dims



REV.	DESCRIPTION	APPROVED	DATE	ECN
A	Rel to production	Johnny	16Nov07	

MATERIAL SEE BOM		TOLERANCES Oplace X ±1 1place X ±0.1 2place .XX ±0.05 Angle ±5°		THIRD ANGLE PROJECTION 		TITLE Zee teq	
FINISH SEE BOM		Remove burrs and sharp edges 		GENERAL ECCENTRICITY <input checked="" type="checkbox"/> 0.06		DWG NO. 5002.SMA.PSC.05.111	
Plating part to be touched by gloves		DRAWN BY Joy Zhou		NAME Joy Zhou		DATE 19Oct07	
Dimension apply before plating		CHECKED BY Colin Dai		NAME Colin Dai		DATE 16Nov07	
XXX - measuring point for plating		APPROVED BY Johnny		NAME Johnny		DATE 16Nov07	
SURFACE		VOLUME		NOTICE: Those drawings and specifications are the property of ZEE TEQ CORPORATION and used only for the specify purpose authorised by ZEE TEQ			
SCALE 8:1		DO NOT SCALE DRAWING		SIZE A4		SHEET 1 of 1	

1.6