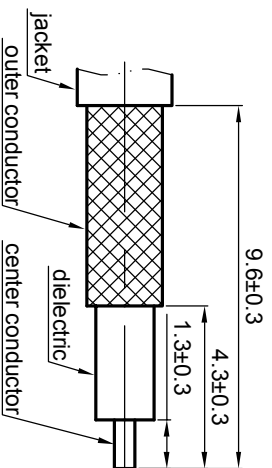


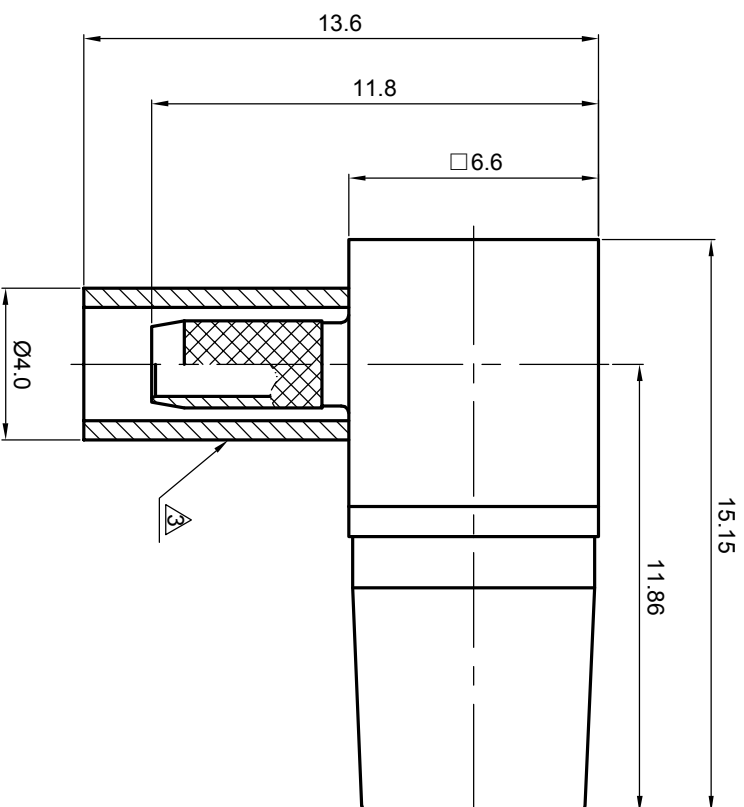
NOTES: (UNLESS OTHERWISE SPECIFIED)

- Interface comply with IEC 169-10.
- Part must be packaged to avoid any damaged during transportation.

A After crimping dimension should be AF/SW 3.25.



Recommended cable stripping dims



REV.	DESCRIPTION	APPROVED	DATE	EON

MATERIAL		SEE BOM OF DETAILS		TOLERANCES		THIRD ANGLE PROJECTION		TITLE	
SEE BOM OF DETAILS		SEE BOM OF DETAILS		Opface X ±1 1place X ±0.1 2place XX ±0.05 Angle ±5°				Zee-teq SMB, jack, cable	
FINISH		SEE BOM OF DETAILS		Remove burrs and sharp edges		GENERAL ECCENTRICITY		DWG. NO.	
SEE BOM OF DETAILS		SEE BOM OF DETAILS				<input checked="" type="checkbox"/> 0.06		5152.SMB.JRC.06.111	
Plating part to be touched by gloves		Plating part to be touched by gloves		-0.2		DRAWN BY		NAME	
Dimension apply before plating		Dimension apply before plating		+0.2		Billy		DATE	
XXX - measuring point for plating		XXX - measuring point for plating				CHECKED BY		APPROVED BY	
SURFACE		VOLUME		NOTICE: Those drawings and specifications are the property of ZEE-TEQ CORPORATION and used only for the specify purpose authorised by ZEE-TEQ		APPROVED BY		SCALE	
								5:1	
								DO NOT SCALE DRAWING	
								SIZE	
								A4	
								SHEET	
								1 of 1	
								REV.	
								S1	

1.6