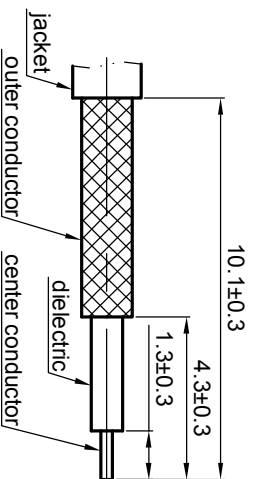


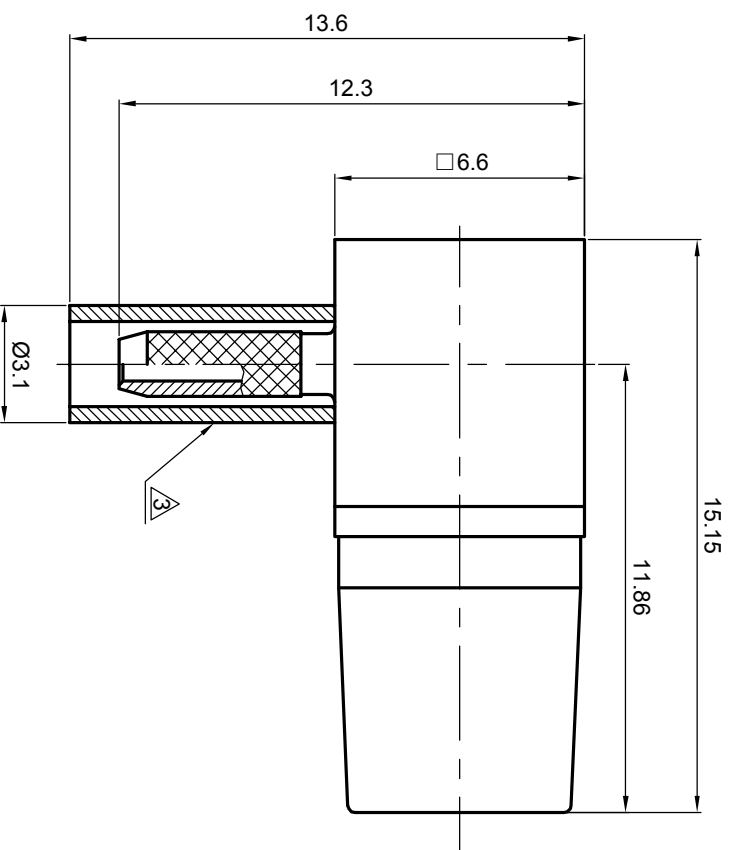
NOTES: (UNLESS OTHERWISE SPECIFIED)

- Interface comply with IEC 169-10.
- Part must be packaged to avoid any damaged during transportation.

A After crimping dimension should be AF/SW 2.67.



Recommended cable stripping dims



REV.	DESCRIPTION	APPROVED	DATE	EON

MATERIAL		SEE BOM OF DETAILS		TOLERANCES		THIRD ANGLE PROJECTION		TITLE	
SEE BOM OF DETAILS		SEE BOM OF DETAILS		Opface X ±1 1place X ±0.1 2place XX ±0.05 Angle ±5°				Zee-teq	
FINISH		Remove burrs and sharp edges		Remove burrs and sharp edges 		GENERAL ECCENTRICITY <input type="checkbox"/> 0.06		SMB, jack, cable	
Plating part to be touched by gloves		-0.2 +0.2		DRAWN BY		NAME		DATE	
Dimension apply before plating				Billy		8 Nov 07		DWG. NO.	
XXX - measuring point for plating		NOTICE: Those drawings and specifications are the property of ZEETEQ CORPORATION and used only for the specify purpose authorised by ZEETEQ		CHECKED BY		APPROVED BY		5151.SMB.JRC.05.111	
SURFACE		VOLUME		SCALE		DO NOT SCALE DRAWING		SIZE	
				5:1				A4	
								SHEET	
								1 of 1	
								REV.	
								S1	

1.6