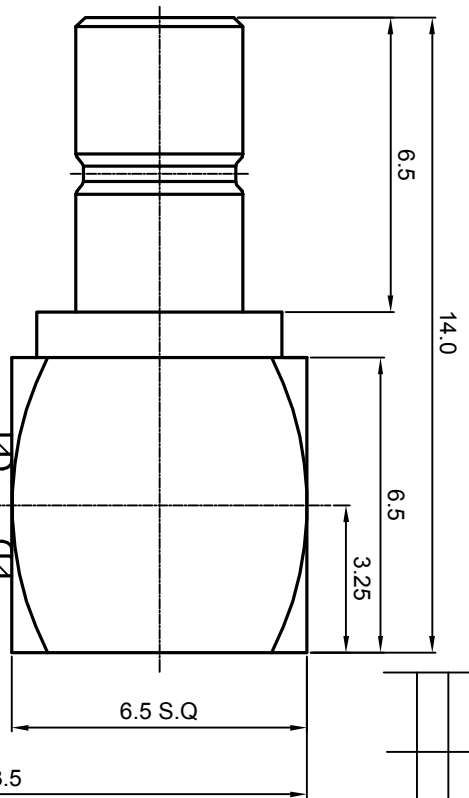
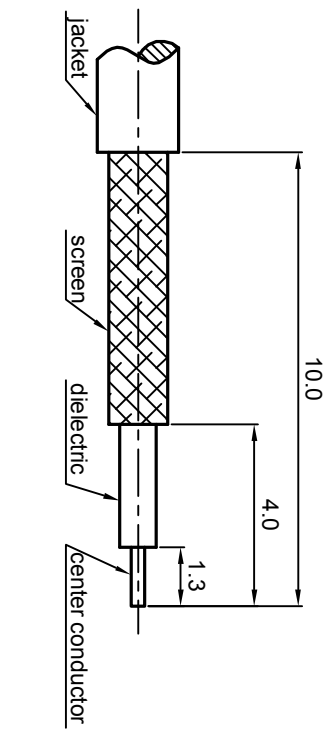


NOTES: (UNLESS OTHERWISE SPECIFIED)

1. The interface comply with IEC169-10.
2. After crimping dimension should be SW2.67
3. Part must be packaged to avoid any damages during transportation.



RECOMMENDED CABLE STRIPPING DIMENSIONS



MATERIAL	
SEE BOM FOR DETAILS	
FINISH	
SEE BOM FOR DETAILS	
Plating part to be touched by gloves	
Dimension apply before plating	
XXX - measuring point for plating	
SURFACE	VOLUME

TOLERANCES	
0place	X ±1
1place	X ±0.1
2place	XX ±0.05
Angle	±5°
Remove burrs and sharp edges	
	-0.2
	+0.2

THIRD ANGLE PROJECTION	
GENERAL ECCENTRICITY	$\sqrt{0.06}$
DRAWN BY	NAME
Danny	Danny
CHECKED BY	DATE
APPROVED BY	13NOV07

TITLE	
SMB, PLUG, CABLE	
DWG. NO.	
5143.SMB.PRC.05.111	
SCALE	SIZE
6:1	A4
DO NOT SCALE DRAWING	SHEET
	1 of 1
REV.	
S1	

REV.	DESCRIPTION	APPROVED	DATE	EON

