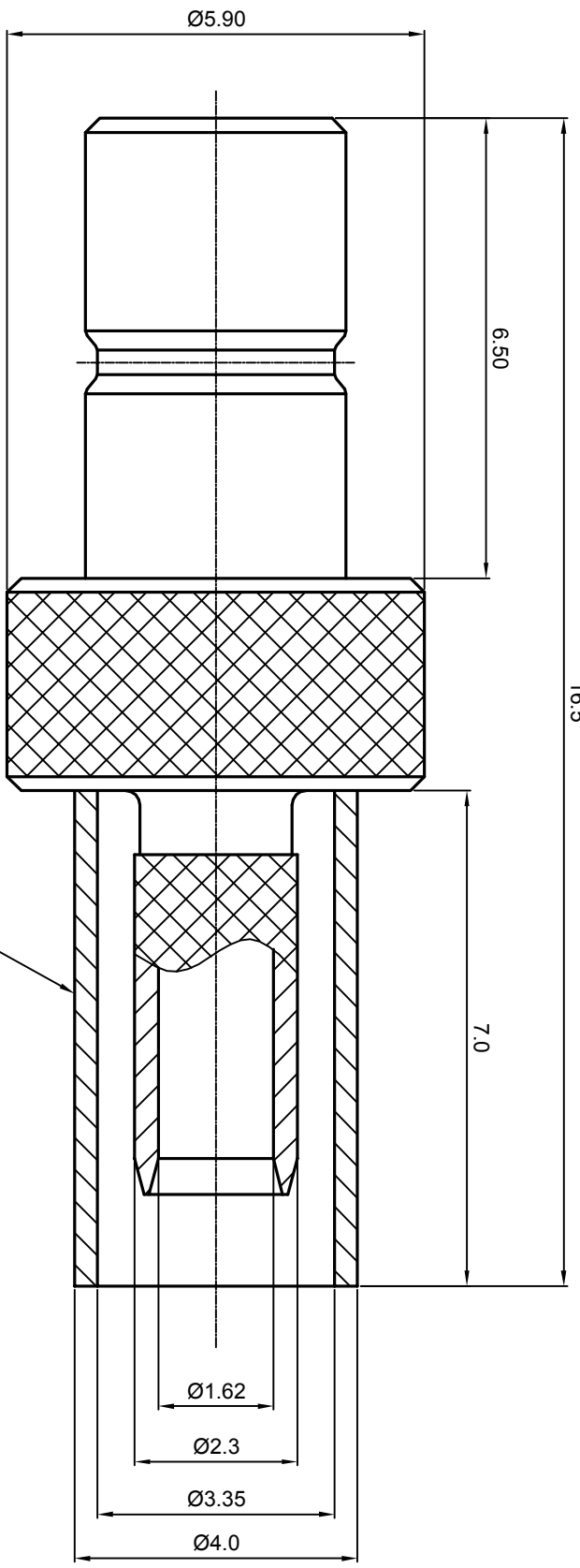


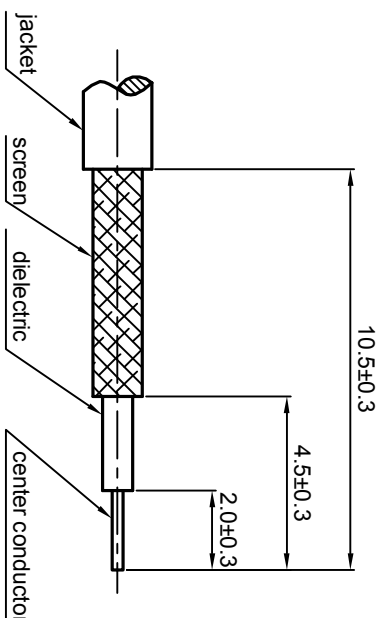
NOTES: (UNLESS OTHERWISE SPECIFIED)

1. The interface comply with IEC169-10.
2. After crimping dimension should be SW3.25
3. Part must be packaged to avoid any damages during transportation.

REV.	DESCRIPTION	APPROVED	DATE	EON
A	REL. TO PRODUCTION	Johnny	25Dec07	



RECOMMENDED CABLE STRIPPING DIMENSIONS



1.6

MATERIAL		SEE BOM FOR DETAILS		TOLERANCES		THIRD ANGLE PROJECTION		TITLE	
FINISH		SEE BOM FOR DETAILS		Opface X ±1 1place X ±0.1 2place XX ±0.05 Angle ±5°				Zee-teq	
Plating part to be touched by gloves				Remove burrs and sharp edges		DRAWN BY Danny 08Nov07 CHECKED BY Colin 25Dec07 APPROVED BY Johnny 25Dec07		DWG. NO. 5141.SMB.PSC.07.111	
Dimension apply before plating						NAME DATE Danny 08Nov07 Colin 25Dec07 Johnny 25Dec07		SCALE 10:1 DO NOT SCALE DRAWING SIZE A4 SHEET 1 of 1	
XXX - measuring point for plating				NOTICE: Those drawings and specifications are the property of ZEE-TEQ CORPORATION and used only for the specify purpose authorised by ZEE-TEQ		REV. A DATE 25Dec07		REV. A	
SURFACE		VOLUME							