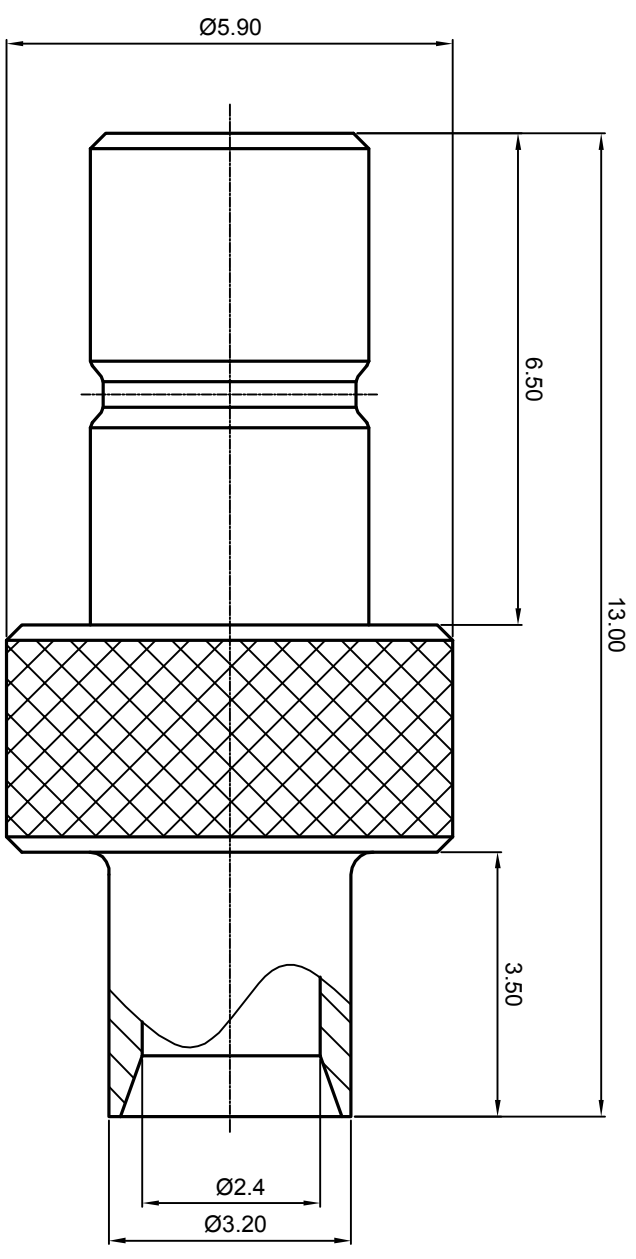
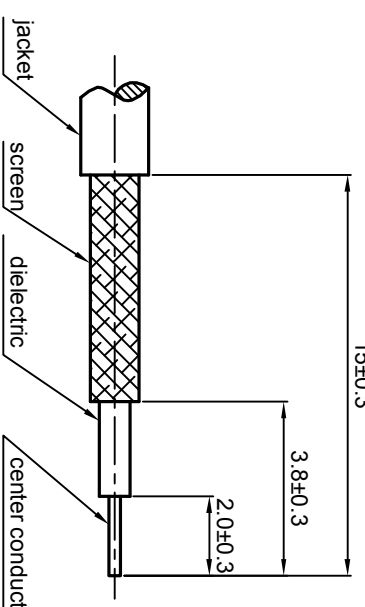


NOTES: (UNLESS OTHERWISE SPECIFIED)

1. The interface comply with IEC169-10.
2. Part must be packaged to avoid any damages during transportation.



RECOMMENDED CABLE STRIPPING DIMENSIONS



REV.	DESCRIPTION	APPROVED	DATE	ECN
A	Rel to production	Johnny	3Aug08	ECN_08_049

MATERIAL SEE BOM FOR DETAILS		TOLERANCES Oplice X ±1 1place .X ±0.1 2place .XX ±0.05 Angle ±5°		THIRD ANGLE PROJECTION 		TITLE SMB, PLUG,CABLE	
FINISH SEE BOM FOR DETAILS		Remove burrs and sharp edges 		GENERAL ECCENTRICITY <input checked="" type="checkbox"/> 0.06		DWG NO. 5138.SMB.PSC.02.110	
Plating part to be touched by gloves		DRAWN BY Collin		NAME Collin		DATE 15NOV07	
Dimension apply before plating		CHECKED BY		APPROVED BY		SCALE 10:1	
XXX - measuring point for plating		SURFACE		VOLUME		DO NOT SCALE DRAWING	
SURFACE		VOLUME		APPROVED BY		SIZE A4	
SURFACE		VOLUME		APPROVED BY		SHEET 1 of 1	
SURFACE		VOLUME		APPROVED BY		REV. A	

