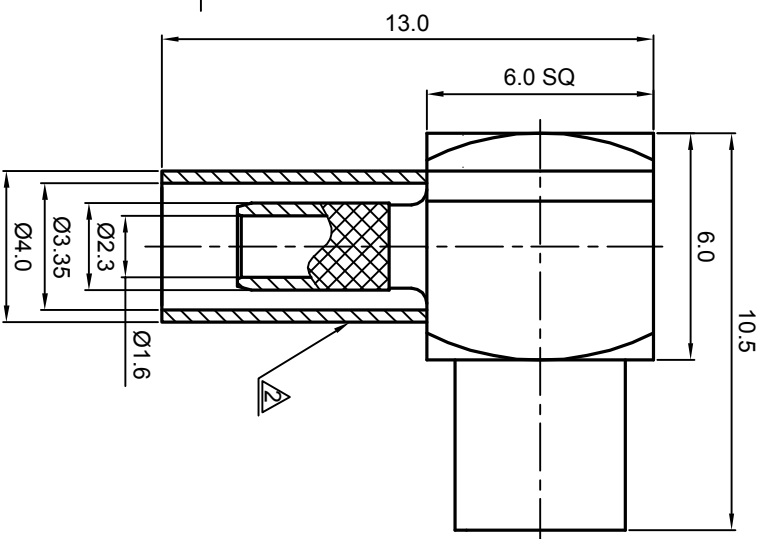
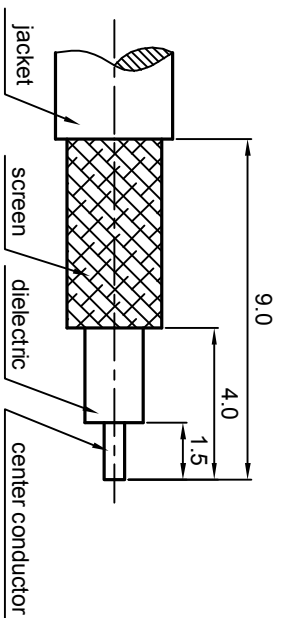


NOTES: (UNLESS OTHERWISE SPECIFIED)

1. The interface comply with IEC169-36.
2. After crimping dimension should be SW3.25

REV.	DESCRIPTION	APPROVED	DATE	EON

RECOMMENDED CABLE STRIPPING DIMENSIONS



MATERIAL	SEE BOM FOR DETAILS
FINISH	SEE BOM FOR DETAILS
Plating part to be touched by gloves	
Dimension apply before plating	
XXX - measuring point for plating	
SURFACE	VOLUME

TOLERANCES	X ±1 1place X ±0.1 2place XX ±0.05 Angle ±5°
Remove burrs and sharp edges	

THIRD ANGLE PROJECTION	
GENERAL ECCENTRICITY	<input checked="" type="checkbox"/> 0.06
DRAWN BY	Danny
CHECKED BY	
APPROVED BY	
NAME	DATE
	31OCT07

TITLE	Zeeteq		
	MCX, JACK, ANGEL		
DWG. NO.	5106.MCX.JRC.07.111		
SCALE	DO NOT SCALE DRAWING	SIZE	SHEET
5:1		A4	1 of 1
REV.	S1		

1	2	3	4	5	6
---	---	---	---	---	---