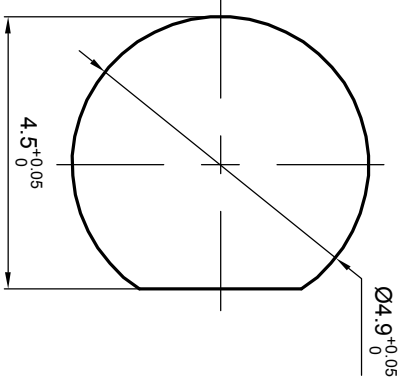
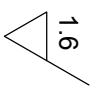
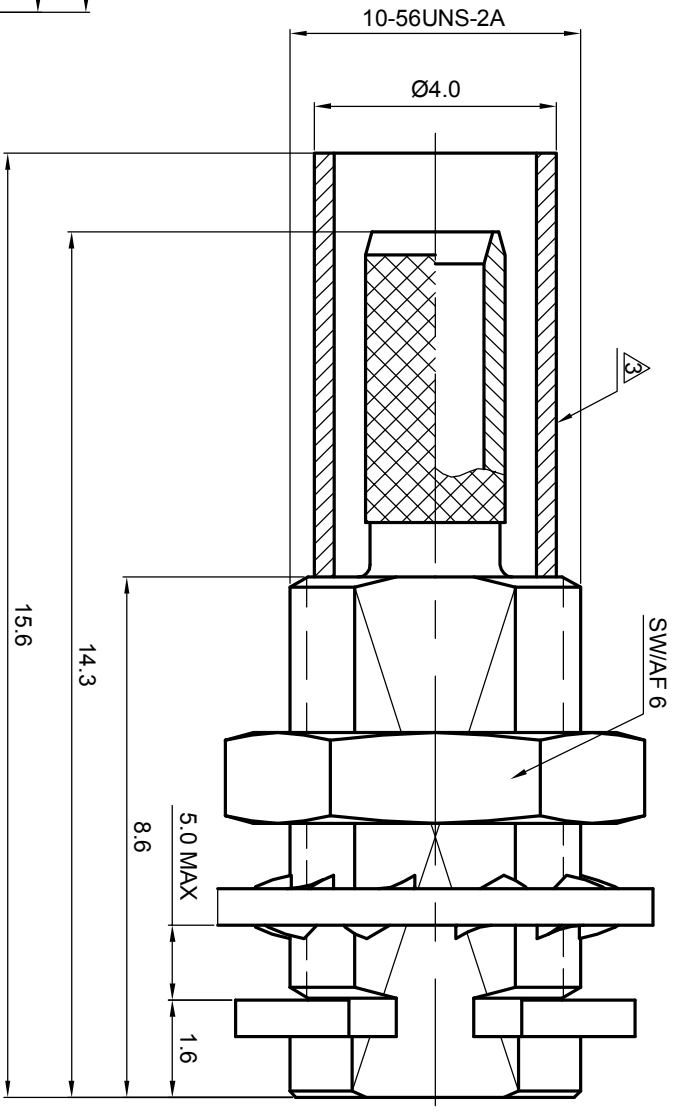
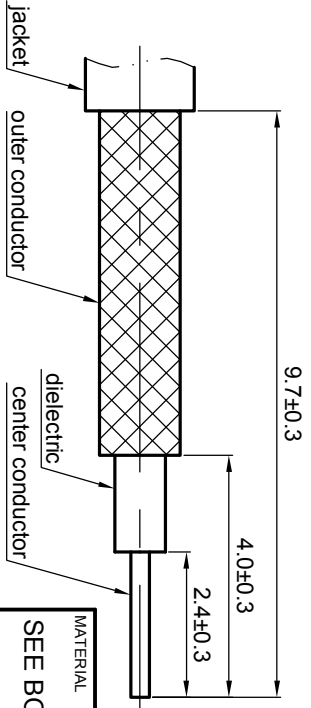


**NOTES: (UNLESS OTHERWISE SPECIFIED)**

1. Interface comply with IEC 61169-36.
2. Part must be packaged to avoid any damaged during transportation.
3. After crimping dimension should be AF/SW 3.25.



Recommended cable stripping dirms



REV.	DESCRIPTION	APPROVED	DATE	EON
A	REL. TO PRODUCTION	Johnny	7 Jul 08	EON_08_031

MATERIAL		SEE BOM OF DETAILS		TOLERANCES		THIRD ANGLE PROJECTION		TITLE	
SEE BOM OF DETAILS		SEE BOM OF DETAILS		Opface X ±1 1place X ±0.1 2place XX ±0.05 Angle ±5°				<b>Zee-teq</b> MCX,jack,cable	
FINISH		REMOVE BURRS AND SHARP EDGES		Remove burrs and sharp edges 		GENERAL ECCENTRICITY $\sqrt{0.06}$		DWG. NO. 5102.MCX.JSC.07.111	
SEE BOM OF DETAILS		SEE BOM OF DETAILS		NOTICE: Those drawings and specifications are the property of ZEETEQ CORPORATION and used only for the specify purpose authorised by ZEETEQ		DRAWN BY Billy Lei 14 Dec 07 CHECKED BY Joy 7 Jul 08 APPROVED BY Johnny 7 Jul 08		SCALE 8:1 DO NOT SCALE DRAWING SIZE A4 SHEET 1 of 1	
PLATING PART TO BE TOUCHED BY GLOVES		PLATING PART TO BE TOUCHED BY GLOVES		XXX - measuring point for plating		NAME Billy Lei DATE 14 Dec 07		REV. A	
SURFACE		VOLUME							