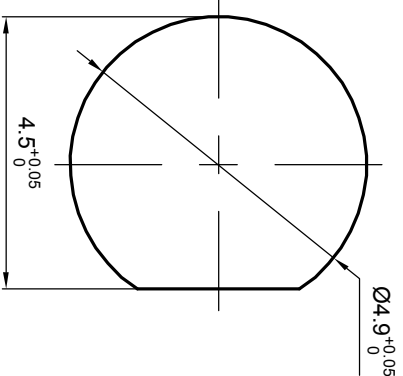
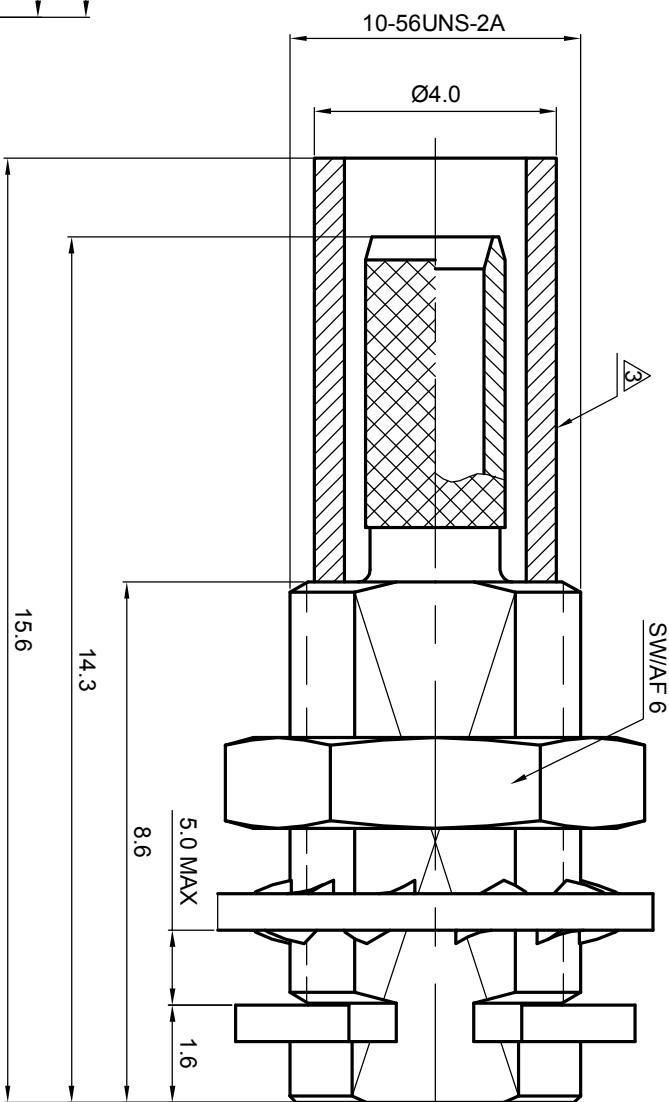
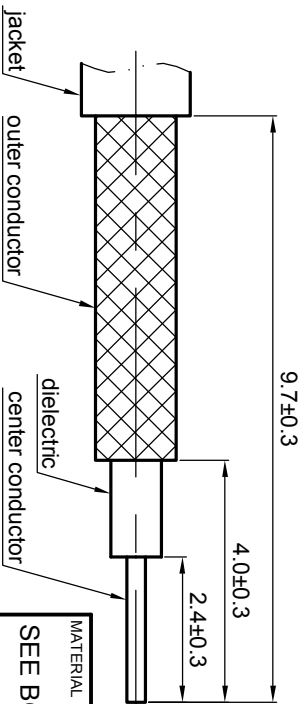


NOTES: (UNLESS OTHERWISE SPECIFIED)

1. Interface comply with IEC 61169-36.
 2. Part must be packaged to avoid any damaged during transportation.
- ⚠ After crimping dimension should be AF/SW 3.25.



Recommended cable stripping dirms



REV.	DESCRIPTION	APPROVED	DATE	EON
A	REL. TO PRODUCTION	Johnny	7 Jul 08	EON_08_031

MATERIAL		TOLERANCES		THIRD ANGLE PROJECTION		TITLE	
SEE BOM OF DETAILS		Opface X ±1 1place X ±0.1 2place XX ±0.05 Angle ±5°					
FINISH		Remove burrs and sharp edges		GENERAL ECCENTRICITY		DWG NO. 5101.MCX.JSC.06.111 REV. A	
SEE BOM OF DETAILS				<input checked="" type="checkbox"/> 0.06		SCALE 8:1 DO NOT SCALE DRAWING SIZE A4 SHEET 1 of 1	
Plating part to be touched by gloves		NOTICE: Those drawings and specifications are the property of ZEETEQ CORPORATION and used only for the specify purpose authorised by ZEETEQ		DRAWN BY Billy Lei 14 Dec 07		DWG NO. 5101.MCX.JSC.06.111 REV. A	
Dimension apply before plating				CHECKED BY Joy 7 Jul 08			
XXX - measuring point for plating				APPROVED BY Johnny 7 Jul 08			
SURFACE							
VOLUME							

1 2 3 4 5 6