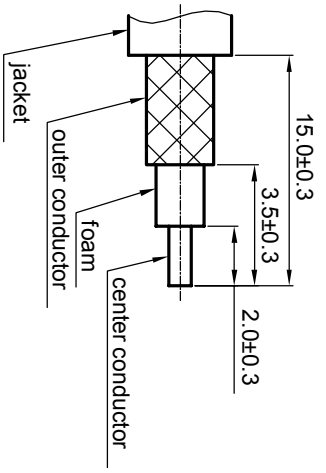
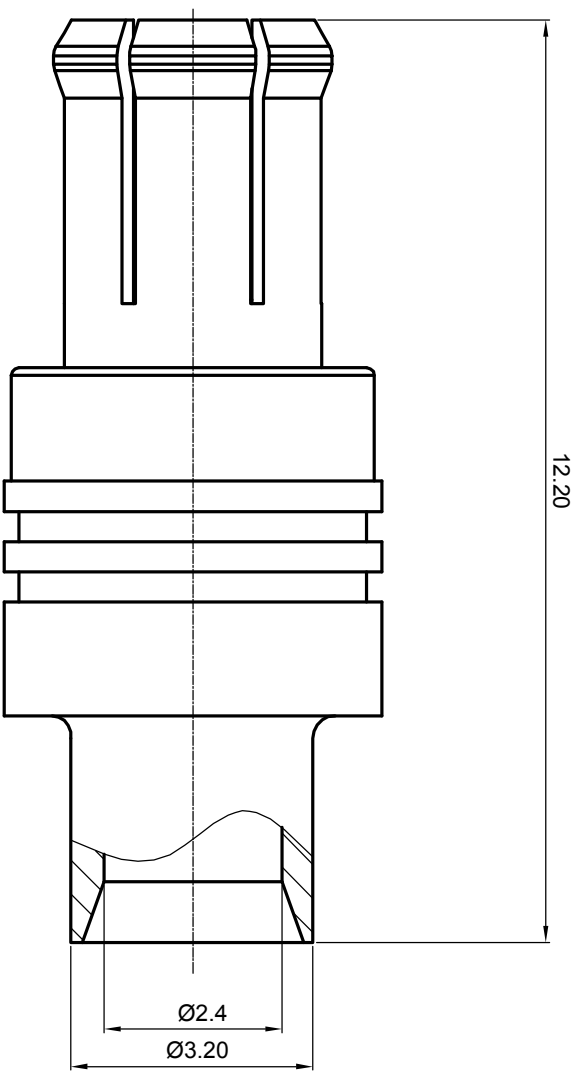


**NOTES: (UNLESS OTHERWISE SPECIFIED)**

1. Interface according to IEC 169-36.
2. Part must be packaged to avoid any damages during transportation.

REV.	DESCRIPTION	APPROVED	DATE	EON



recommended cable stripping dims

1.6

MATERIAL		SEE BOM		TOLERANCES		THIRD ANGLE PROJECTION	
FINISH		SEE BOM		Opface X ±1 1place X ±0.1 2place XX ±0.05 Angle ±5°			
SURFACE		SEE BOM		Remove burrs and sharp edges 		GENERAL ECCENTRICITY <input checked="" type="checkbox"/> 0.06	
VOLUME		SEE BOM		DRAWN BY		NAME	
				Colin		DATE	
				CHECKED BY		15Nov07	
				APPROVED BY			

TITLE		DWG. NO.		SCALE		SIZE	
		5091.MCX.PSC.02.111		8:1		A4	
MCX.PLUG, CABLE				DO NOT SCALE DRAWING		SHEET	
						1 of 1	
						REV.	
						S1	