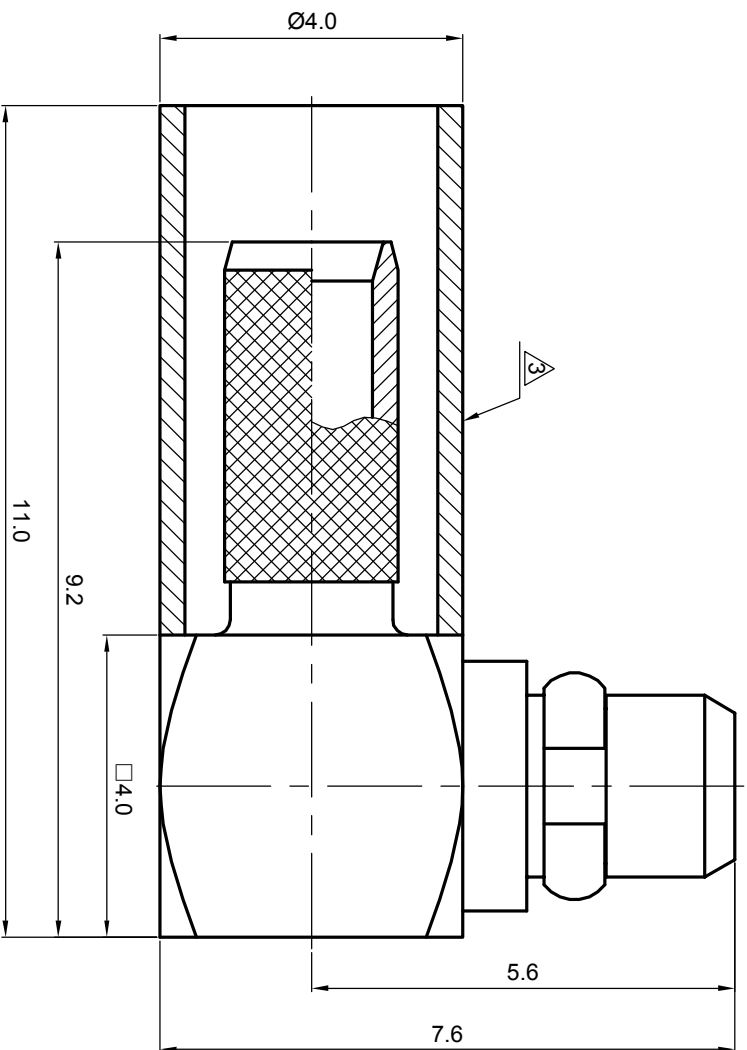
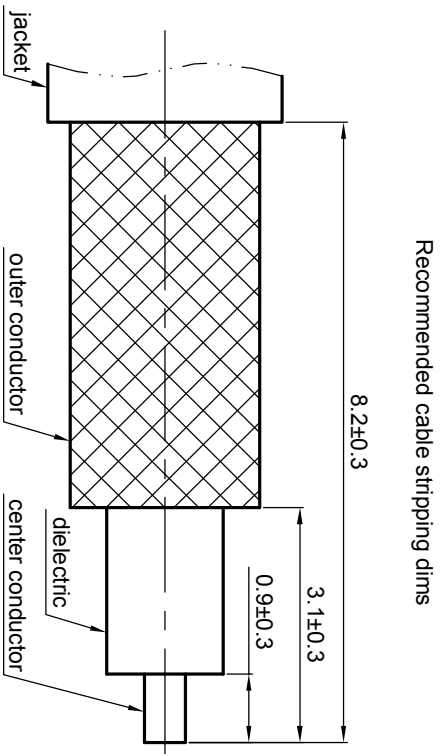


NOTES: (UNLESS OTHERWISE SPECIFIED)

1. Interface comply with CECC 22340.
 2. Part must be packaged to avoid any damaged during transportation.
- A** After crimping dimension should be AF/SW 3.25.



MATERIAL		TOLERANCES		THIRD ANGLE PROJECTION		TITLE	
SEE BOM OF DETAILS		Opface X ±1 1place X ±0.1 2place XX ±0.05 Angle ±5°				Zee-teq	
SEE BOM OF DETAILS		Remove burrs and sharp edges		GENERAL ECCENTRICITY <input checked="" type="checkbox"/> 0.06		MMCX, plug, cable	
FINISH		-0.2 +0.2		DRAWN BY Billy CHECKED BY APPROVED BY		DWG NO. 5127.MMCX.PRC.07.111	
SEE BOM OF DETAILS		Plating part to be touched by gloves Dimension apply before plating XXX - measuring point for plating		NAME DATE 16 Nov 07		SCALE 10:1 DO NOT SCALE DRAWING	
SURFACE		VOLUME		NOTICE: Those drawings and specifications are the property of ZEEITEQ CORPORATION and used only for the specify purpose authorised by ZEEITEQ		SIZE A4 SHEET 1 of 1	
REV.		DESCRIPTION		APPROVED		DATE	
ECN							