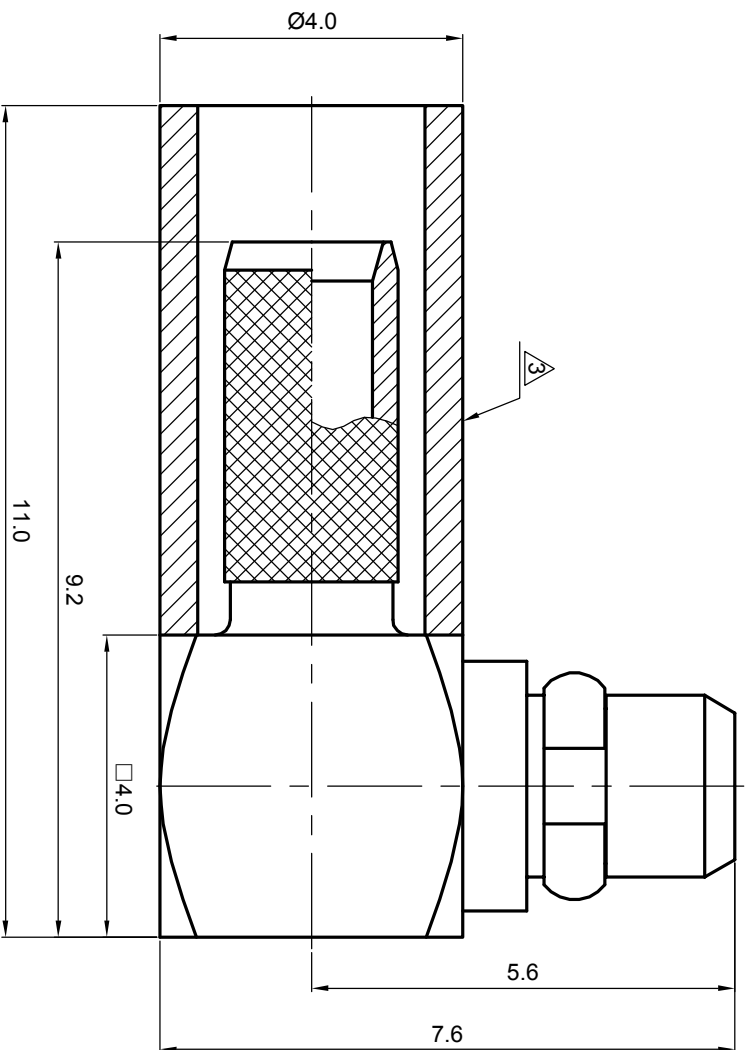
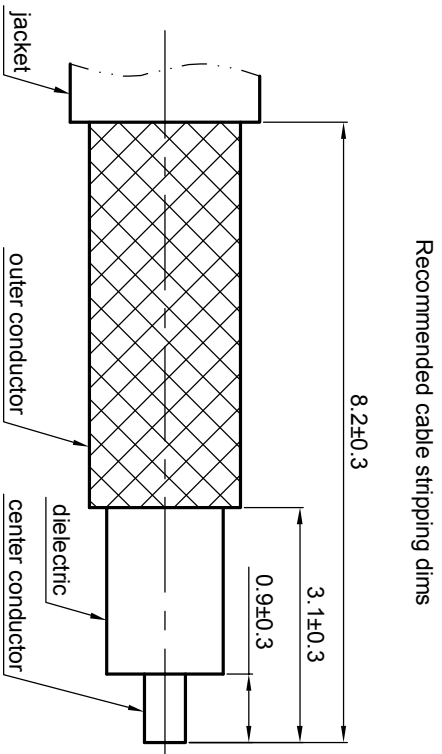


NOTES: (UNLESS OTHERWISE SPECIFIED)

1. Interface comply with CECC 22340.
 2. Part must be packaged to avoid any damaged during transportation.
- A** After crimping dimension should be AF/SW 3.25.



Recommended cable stripping dims

MATERIAL	
SEE BOM OF DETAILS	
FINISH	
SEE BOM OF DETAILS	
Plating part to be touched by gloves	
Dimension apply before plating	
XXX - measuring point for plating	
SURFACE	VOLUME

TOLERANCES	
0place	X ±1
1place	X ±0.1
2place	XX ±0.05
Angle	±5°
Remove burrs and sharp edges	
	-0.2
	+0.2

THIRD ANGLE PROJECTION	
GENERAL ECCENTRICITY	<input checked="" type="checkbox"/> 0.06
DRAWN BY	NAME
Billy	
CHECKED BY	DATE
	16 Nov 07
APPROVED BY	

TITLE	
MMCX, plug, cable	
DWG NO.	
5126.MMCX.PRC.06.111	
SCALE	DO NOT SCALE DRAWING
10:1	
SIZE	SHEET
A4	1 of 1
REV.	
S1	

REV.	DESCRIPTION	APPROVED	DATE	ECN