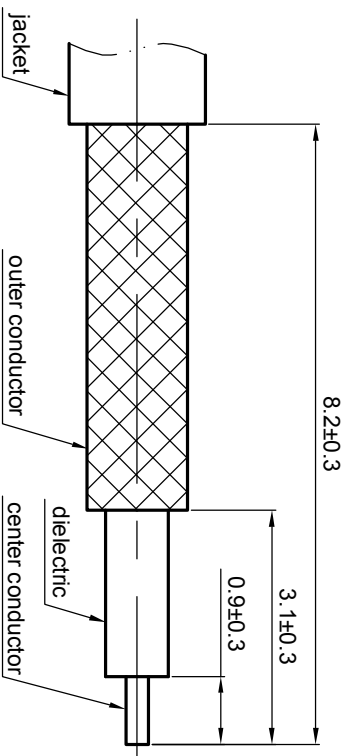
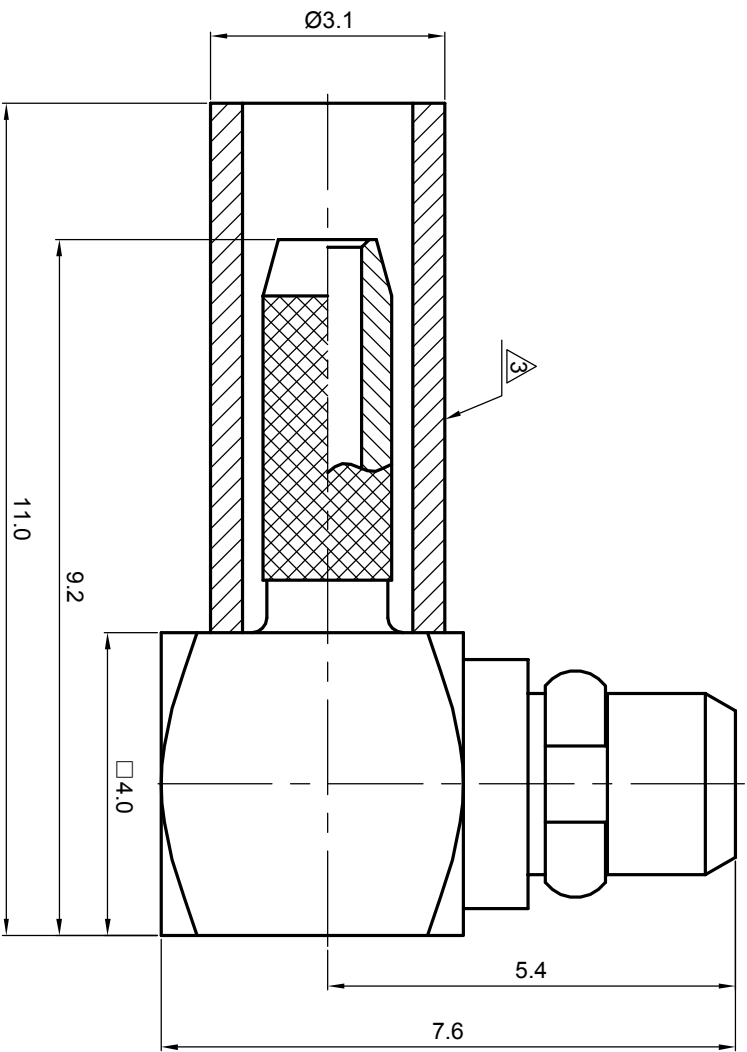


NOTES: (UNLESS OTHERWISE SPECIFIED)

1. Interface comply with CECC 22340.
 2. Part must be packaged to avoid any damaged during transportation.
- A** After crimping dimension should be AF/SW 2.67.



Recommended cable stripping dims



1.6

REV.	DESCRIPTION	APPROVED	DATE	ECN

MATERIAL		TOLERANCES		THIRD ANGLE PROJECTION		TITLE	
SEE BOM OF DETAILS		Opface X ±1 1place .X ±0.1 2place .XX ±0.05 Angle ±5°				Zee-teq	
SEE BOM OF DETAILS		Remove burrs and sharp edges 		GENERAL ECCENTRICITY <input checked="" type="checkbox"/> 0.06		MMCX, plug, cable	
FINISH		DRAWN BY		NAME		DWG NO.	
Plating part to be touched by gloves		Billy		19 NOV 07		5125.MMCX.PRC.05.111	
Dimension apply before plating		CHECKED BY		DATE		REV.	
XXX - measuring point for plating		APPROVED BY				S1	
SURFACE		VOLUME		SCALE		SHEET	
				10:1		1 of 1	
				DO NOT SCALE DRAWING			

NOTICE: Those drawings and specifications are the property of ZEEITEQ CORPORATION and used only for the specify purpose authorised by ZEEITEQ