

DATA SHEET

Cable connector



Part Number

5124.MMCX.PRC.02.111

Description

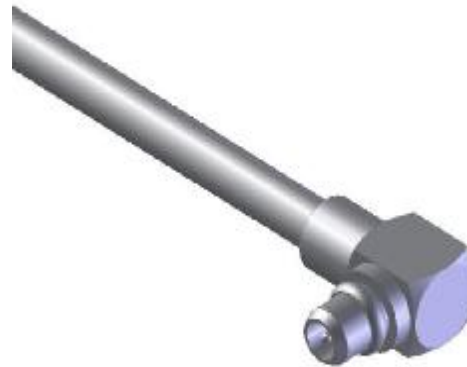
MMCX, Plug, Right Angle, Cable Mount

Interface Standard

IEC 60169-36

Suitable Cable

RG405/U, UT86



Electrical Data

Impedance	50	Ω		
Max. operating frequency	6	GHz	connector limited	
Frequency range	DC to 1GHz	1 to 2.2GHz	2.2 to 3GHz	3 to 6GHz
VSWR	≤1.06	≤1.10	≤1.10	≤1.10
Insertion loss	0.05 $\sqrt{f(\text{GHz})}$	dB		
Insulation resistance	≥1000	MΩ		
Center contact resistance	≤5	mΩ		
Outer contact resistance	≤2.5	mΩ		
Dielectric withstanding voltage	≥500	Vrms @ 50Hz	cable limited	
Working voltage	≤350	Vrms @ 50Hz	cable limited	

Mechanical Data

Mating cycles	≥500	
Contact captivation	≥10	N
Engagement force	≤25	N
Disengagement Force	8-20	N
Center contact	solder	
Outer contact	solder	
Cable retention force		
-RG405/U	≥100	N
-UT86	≥158.5	N

Environmental Data

Operating temperature	restricted by cable and/or silicone used
2002/95/EC (ROHS)	compliant
Sealing	N/A
Thermal shock	MIL-STD-202 Method107, condition B
Moisture resistance	MIL-STD-202 Method106
Corrosion resistance	MIL-STD-202 Method101, condition B
Vibration	MIL-STD-202 Method204, condition D
Shock	MIL-STD-202 Method213, condition I

Material Data

Piece Parts	Material	Surface Plating
center contact	Brass	Au
outer contact	Beryllium copper	Au
body	Brass	Au
insulator	PTFE	
lid	Brass	Au