

# DATA SHEET

## Cable connector



### Part Number

5083.716.JSC.04.220

### Description

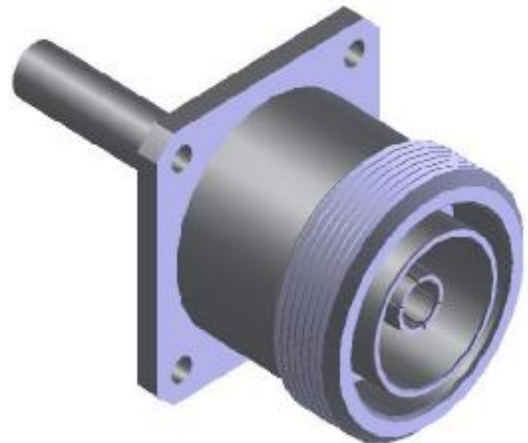
7/16, Jack, Straight, Flange Mount

### Interface Standard

IEC 169-4

### Suitable Cable

UT250 , RG401/U



### Electrical Data

Impedance	50	$\Omega$		
Max. operating frequency	7.5	GHz	connector limited	
Frequency range	DC to 1GHz	1 to 2.2GHz	2.2 to 3GHz	3 to 6GHz
VSWR	$\leq 1.05$	$\leq 1.07$	$\leq 1.07$	$\leq 1.10$
Insertion loss	$0.03\sqrt{f(\text{GHz})}$	dB		
Insulation resistance	$\geq 10000$	M $\Omega$		
Center contact resistance	$\leq 0.4$	m $\Omega$		
Outer contact resistance	$\leq 1.5$	m $\Omega$		
Dielectric withstanding voltage	$\geq 2500$	Vrms @ 50Hz	cable limited	
Working voltage	$\geq 1000$	Vrms @ 50Hz	cable limited	
PIM	$\leq -155$	dBc (2 $\times$ 20W carriers)		

### Mechanical Data

Mating cycles	$\geq 500$	
Center contact axial force	$\geq 200$	N
Center contact axial torque	$\geq 0.45$	Nm
contact gauge ret. Force	$\geq 6\sim 18$	N
Center contact	solder	
Outer contact	solder	
Cable retention force		
-UT250	$\geq 852$	N
-RG401/U	$\geq 565$	N

### Environmental Data

Operating temperature	restricted by cable and/or silicone used
2002/95/EC (ROHS)	compliant
Sealing	N/A
Thermal shock	MIL-STD-202 Method107, condition B
Moisture resistance	MIL-STD-202 Method106
Corrosion resistance	MIL-STD-202 Method101, condition B
Vibration	MIL-STD-202 Method204, condition D
Shock	MIL-STD-202 Method213, condition I

### Material Data

Piece Parts	Material	Surface Plating
center contact	Phosphor bronze	Ag
outer contact	Brass	Ag
insulator	PTFE	