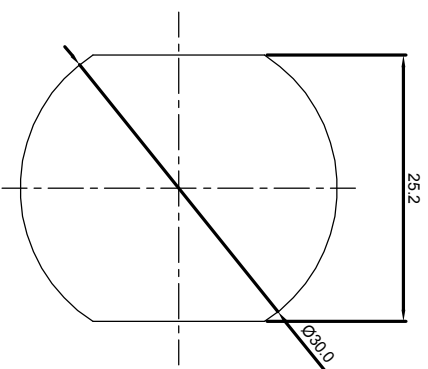
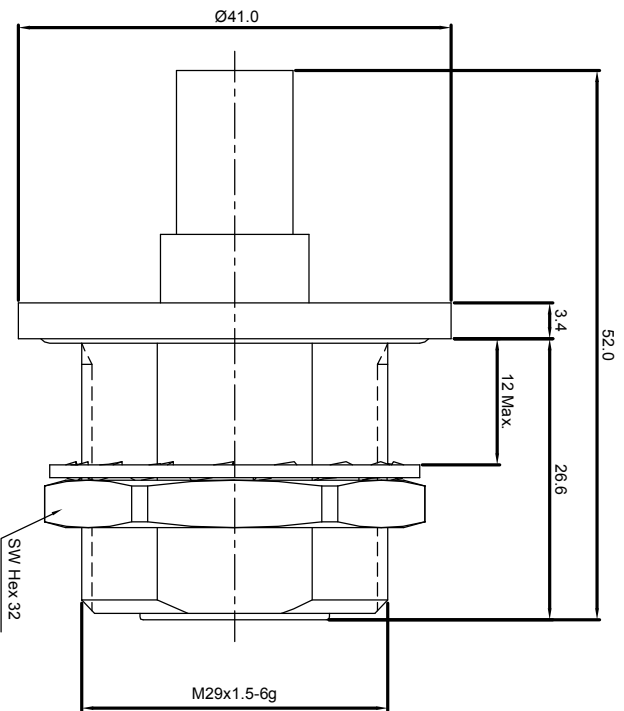


NOTES: (UNLESS OTHERWISE SPECIFIED)

1. Interface comply with IEC 169-4.
2. Part must be packaged to avoid any damaged during transportation.



Recommended mounting hole



REV.	DESCRIPTION	APPROVED	DATE	ECN

MATERIAL		TOLERANCES		THIRD ANGLE PROJECTION		TITLE	
See bom		Optical X ±1		Zeeteq		716, PLUG, CABLE	
See bom		1place X ±0.1		GENERAL ECCENTRICITY $\begin{matrix} \text{Z} \\ \text{1008} \end{matrix}$		DWG NO. 5081.716.JSC.12.233	
FINISH		2place .XX ±0.05	Remove burrs and sharp edges	DRAWN BY	NAME	DATE	REV.
Plating part to be touched by gloves		Angle ±5°		Joy zhou	Joy zhou	01Nov07	S1
Dimension apply before plating				CHECKED BY			
XXX - measuring point for plating				APPROVED BY			
SURFACE		SURFACE		SCALE		SHEET	
VOLUME		VOLUME		2:1		1 of 1	
		DO NOT SCALE DRAWING		SIZE		A4	

NOTICE: Those drawings and specifications are the property of ZEETEQ CORPORATION and used only for the specify purpose authorised by ZEETEQ

1 2 3 4 5 6