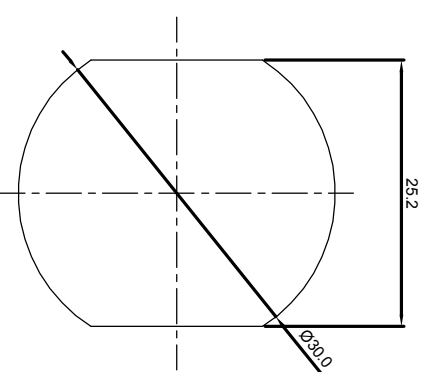
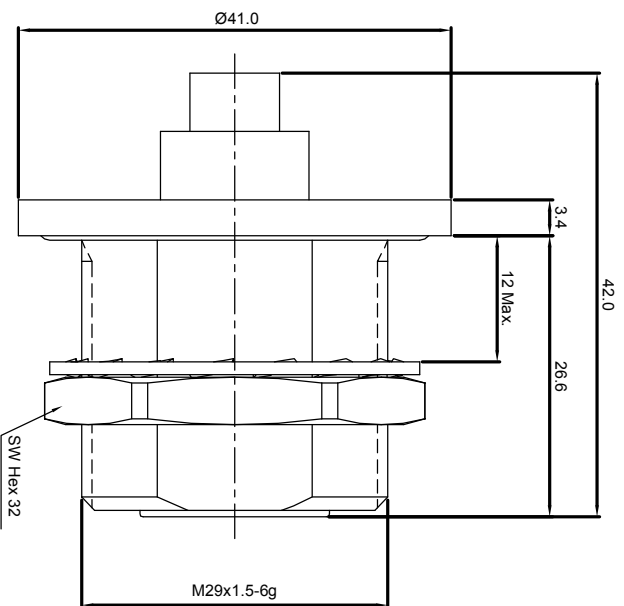


NOTES: (UNLESS OTHERWISE SPECIFIED)

1. Interface comply with IEC 169-4.
2. Part must be packaged to avoid any damaged during transportation.



Recommended mounting hole

1.6

REV.	DESCRIPTION	APPROVED	DATE	ECN

MATERIAL		TOLERANCES		THIRD ANGLE PROJECTION		TITLE	
See bom		Oplate X ±1 1place .X ±0.1 2place .XX ±0.05 Angle ±5°				Zeeteq	
FINISH		Remove burrs and sharp edges		GENERAL ECCENTRICITY		DRAWN BY	
See bom				±0.05		Joy Zhou	
Plating part to be touched by gloves		DRAWN BY		NAME		DATE	
Dimension apply before plating		Joy Zhou		01Nov07			
XXX - measuring point for plating		CHECKED BY		APPROVED BY			
SURFACE		VOLUME		NOTICE: Those drawings and specifications are the property of ZEETEQ CORPORATION and used only for the specify purpose authorised by ZEETEQ		SCALE	
						2:1	
						DO NOT SCALE DRAWING	
						SIZE	
						A4	
						SHEET	
						1 of 1	
						REV.	
						S1	

DWG NO. 5079.716.JSC.04.233

716,PLUG,CABLE

S1

Zeeteq

1 2 3 4 5 6

1 2 3 4 5 6