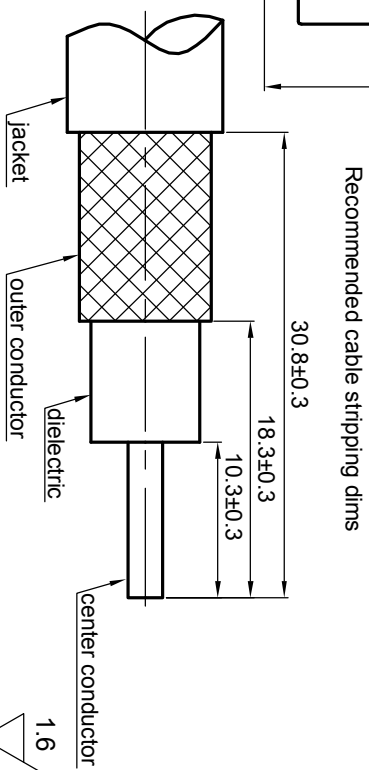
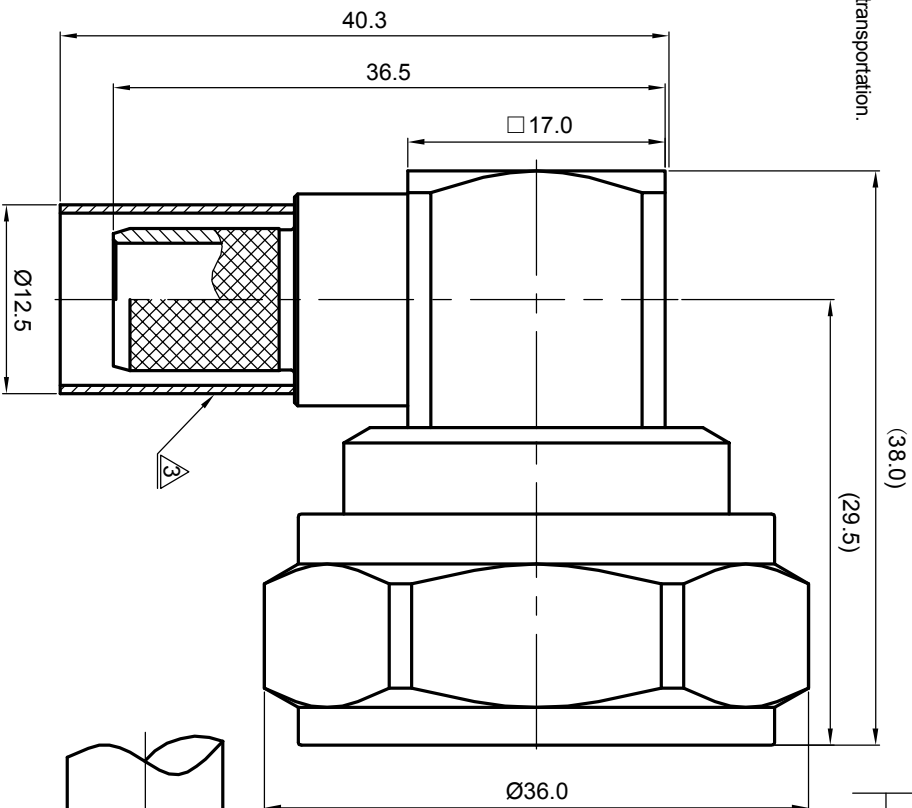


NOTES: (UNLESS OTHERWISE SPECIFIED)

1. Interface comply with IEC 169-4.
 2. Part must be packaged to avoid any damaged during transportation.
- ⚠ After crimping dimension should be AF/SW 10.9.



Recommended cable stripping dims

| REV. | DESCRIPTION | APPROVED | DATE | ECN |
|------|-------------|----------|------|-----|
| | | | | |
| | | | | |
| | | | | |

| | |
|--------------------------------------|--------|
| MATERIAL | |
| SEE BOM OF DETAILS | |
| FINISH | |
| SEE BOM OF DETAILS | |
| Plating part to be touched by gloves | |
| Dimension apply before plating | |
| XXX - measuring point for plating | |
| SURFACE | VOLUME |

| | |
|------------------------------|----------|
| TOLERANCES | |
| 1place | X ±1 |
| 2place | X ±0.1 |
| Angle | XX ±0.05 |
| Remove burrs and sharp edges | ±5° |
| | -0.2 |
| | +0.2 |

| | |
|------------------------|-----------|
| THIRD ANGLE PROJECTION | |
| | |
| GENERAL ECCENTRICITY | √ 0.06 |
| DRAWN BY | NAME |
| Billy Lei | 27 Nov 07 |
| CHECKED BY | DATE |
| APPROVED BY | |

| | |
|---------------------|----------------------|
| TITLE | |
| 716, plug, cable | |
| DWG NO. | |
| 5074.716.PRC.12.233 | |
| SCALE | DO NOT SCALE DRAWING |
| 2:1 | |
| SIZE | SHEET |
| A4 | 1 of 1 |
| REV. | |
| S1 | |



A B C D 1 2 3 4 5 6