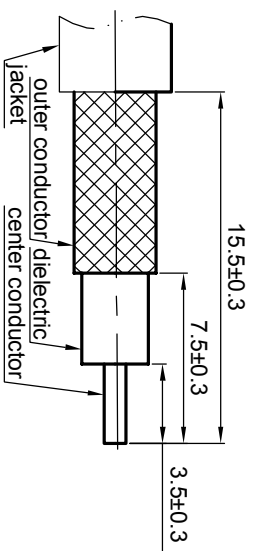
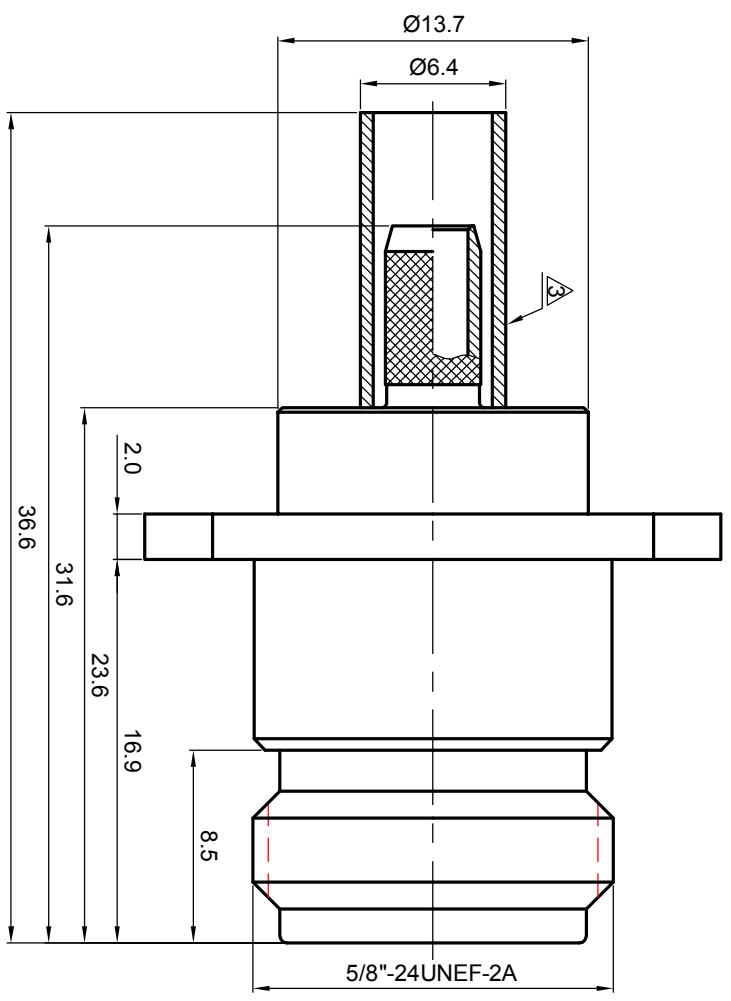
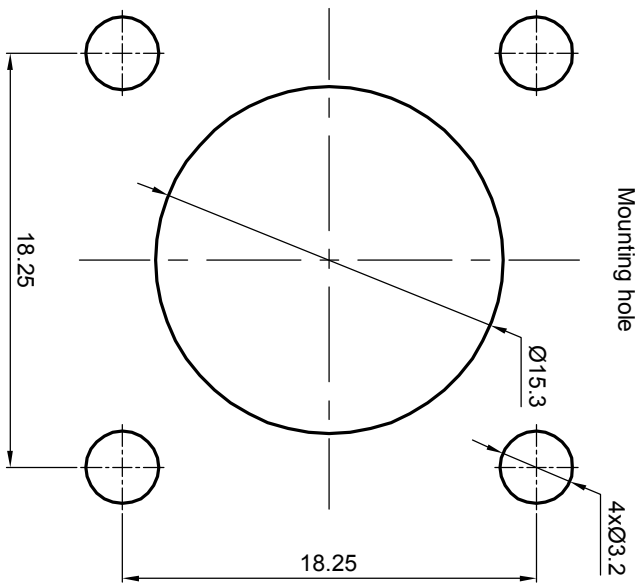


NOTES: (UNLESS OTHERWISE SPECIFIED)

- Interface comply with IEC 169-16.
- Part must be packaged to avoid any damaged during transportation.

⚠ After crimping dimension should be A/F/SW 5.41.



Recommended cable stripping dims

MATERIAL		SEE BOM OF DETAILS		TOLERANCES		THIRD ANGLE PROJECTION		TITLE	
SEE BOM OF DETAILS		SEE BOM OF DETAILS		Opface X ±1 1place X ±0.1 2place XX ±0.05 Angle ±5°				Zeeteq N,jack, cable	
FINISH		SEE BOM OF DETAILS		Remove burrs and sharp edges		GENERAL ECCENTRICITY		DWG NO.	
SEE BOM OF DETAILS		SEE BOM OF DETAILS						5219.N.JSC.08.133	
Plating part to be touched by gloves		Plating part to be touched by gloves		-0.2		DRAWN BY		NAME	
Dimension apply before plating		Dimension apply before plating		+0.2		BILLY		DATE	
XXX - measuring point for plating		XXX - measuring point for plating				CHECKED BY		190c107	
SURFACE		VOLUME		APPROVED BY		APPROVED BY		SCALE	
								3:1	
								DO NOT SCALE DRAWING	
								SIZE	
								A4	
								SHEET	
								1 of 1	
								REV.	
								S1	



REV.	DESCRIPTION	APPROVED	DATE	ECN