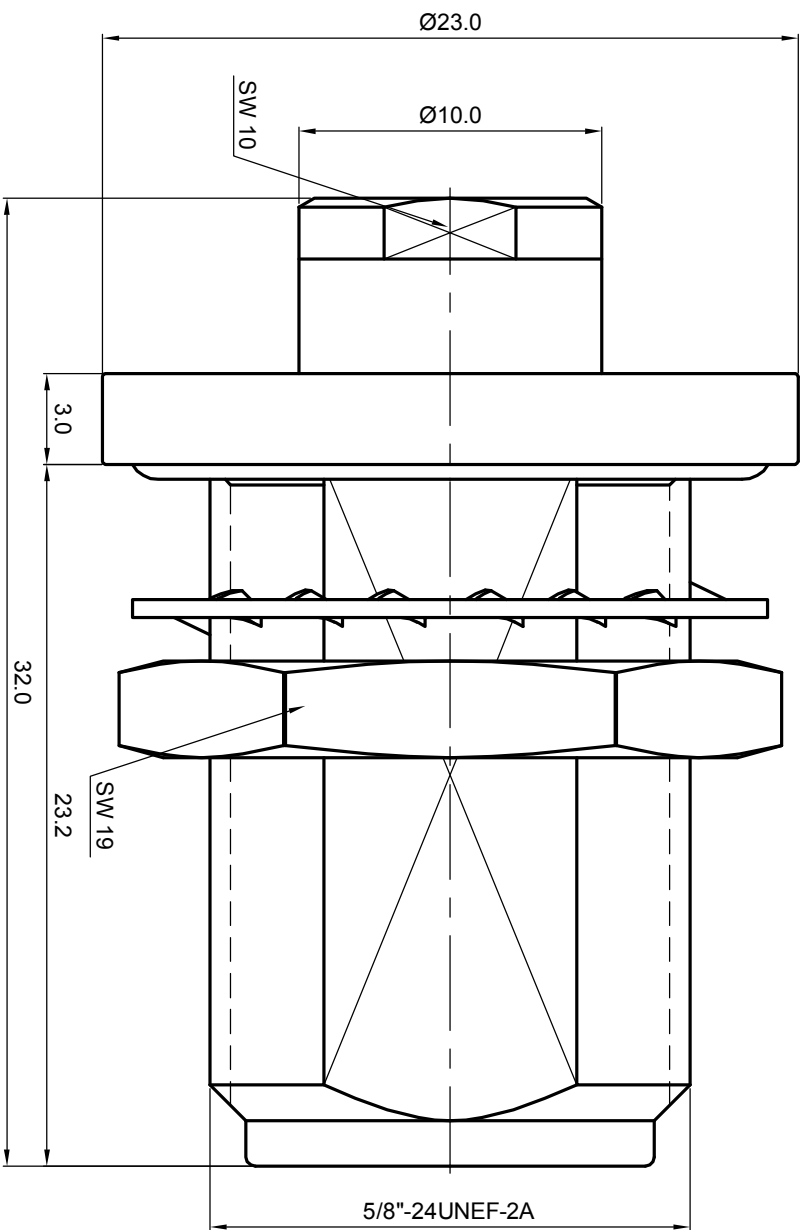
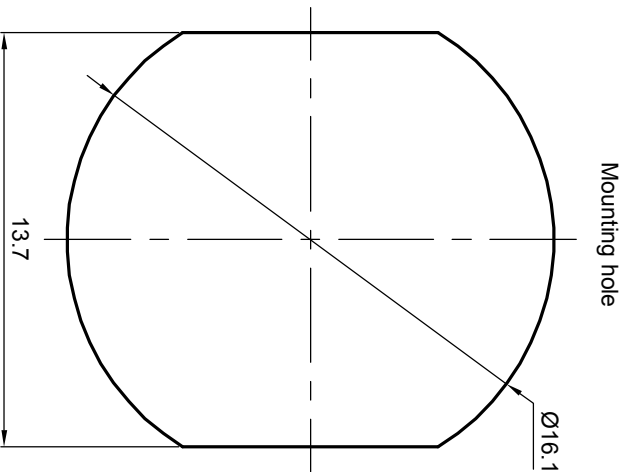
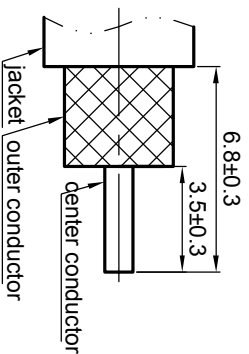


**NOTES: (UNLESS OTHERWISE SPECIFIED)**

1. Interface comply with IEC 169-16.
2. Part must be packaged to avoid any damaged during transportation.



Recommended cable stripping dims



REV.	DESCRIPTION	APPROVED	DATE	ECN

MATERIAL		SEE BOM OF DETAILS		TOLERANCES		THIRD ANGLE PROJECTION		TITLE	
SEE BOM OF DETAILS		SEE BOM OF DETAILS		Opface X ±1 1place X ±0.1 2place XX ±0.05 Angle ±5°				<b>Zee-teq</b> N,jack, cable	
FINISH		REMOVE BURRS AND SHARP EDGES		Remove burrs and sharp edges 		GENERAL ECCENTRICITY <input checked="" type="checkbox"/> 0.06		DWG NO. 5193.N.JSC.09.133	
SEE BOM OF DETAILS		Plating part to be touched by gloves Dimension apply before plating XXX - measuring point for plating		DRAWN BY Billy Lei 21 Feb 08		NAME Billy Lei		DATE 21 Feb 08	
SURFACE		VOLUME		NOTICE: Those drawings and specifications are the property of ZEE-TEQ CORPORATION and used only for the specify purpose authorised by ZEE-TEQ		CHECKED BY		SCALE 4:1	
						APPROVED BY		DO NOT SCALE DRAWING	
								SIZE A4	
								SHEET 1 of 1	
								REV. S1	

