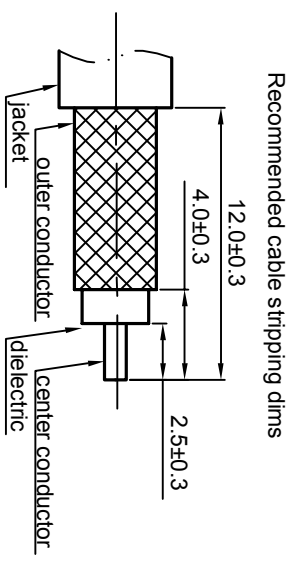
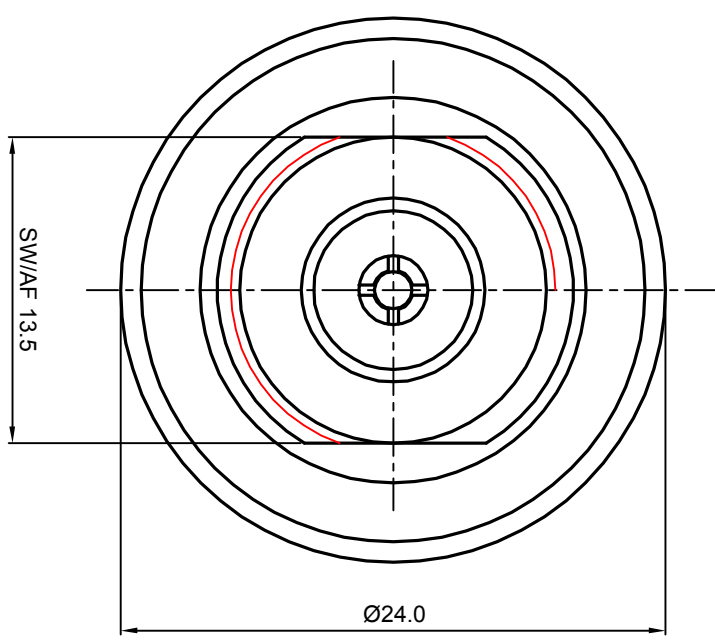
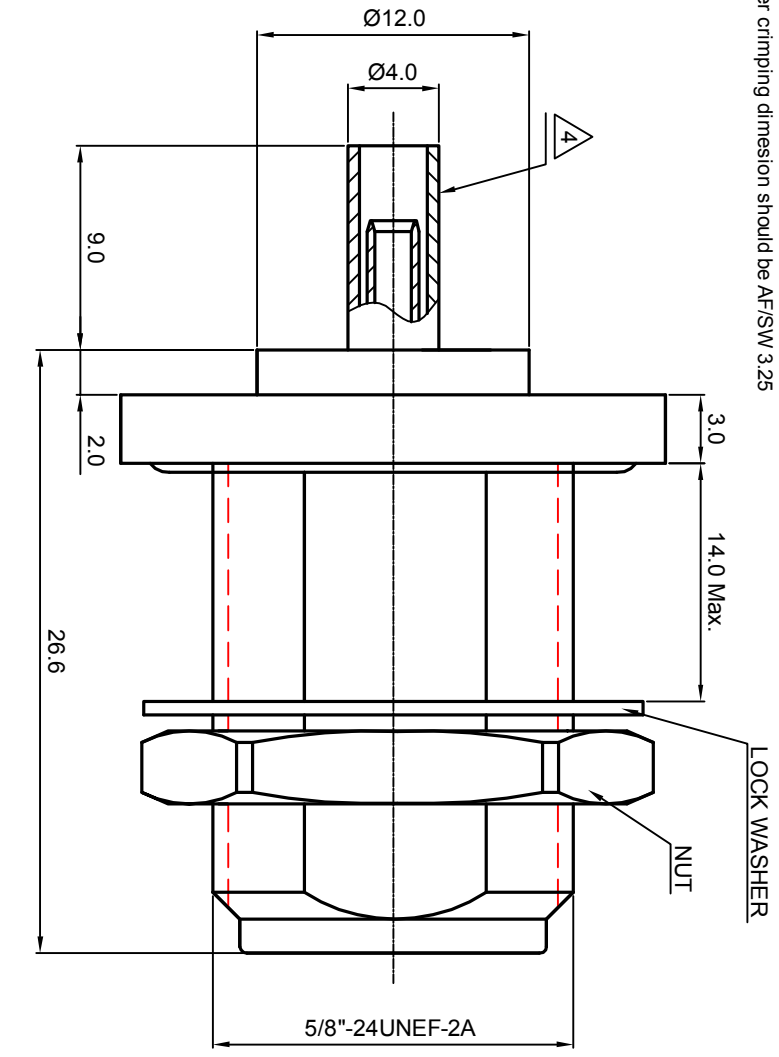


NOTES: (UNLESS OTHERWISE SPECIFIED)

1. Interface according to IEC169-16.
2. With a protective cap.
3. Part must be packaged to avoid any damages during transportation.
4. After crimping dimension should be AF/SW 3.25



Recommended cable stripping dims

REV.	DESCRIPTION	APPROVED	DATE	EON
A	REL TO PRODUCTION	Johnny	04Aug08	ECN_08_042

MATERIAL		SEE BOM		THIRD ANGLE PROJECTION		TITLE	
FINISH		SEE BOM				<p>Zee-teq</p> <p>N, JACK, FLANGE</p>	
TOLERANCES		Opface X ±1 1place X ±0.1 2place XX ±0.05 Angle ±5°		GENERAL ECCENTRICITY <input checked="" type="checkbox"/> 0.06		DWG NO. 5059.N.JSC.07.133	
Remove burrs and sharp edges				DRAWN BY Colin 14Nov07		REV. A	
Plating part to be touched by gloves		XXX - measuring point for plating		CHECKED BY		SCALE 3:1	
SURFACE		VOLUME		APPROVED BY		DO NOT SCALE DRAWING	
NOTICE: Those drawings and specifications are the property of ZEETEQ CORPORATION and used only for the specify purpose authorised by ZEETEQ						SIZE A4	
						SHEET 1 of 1	

