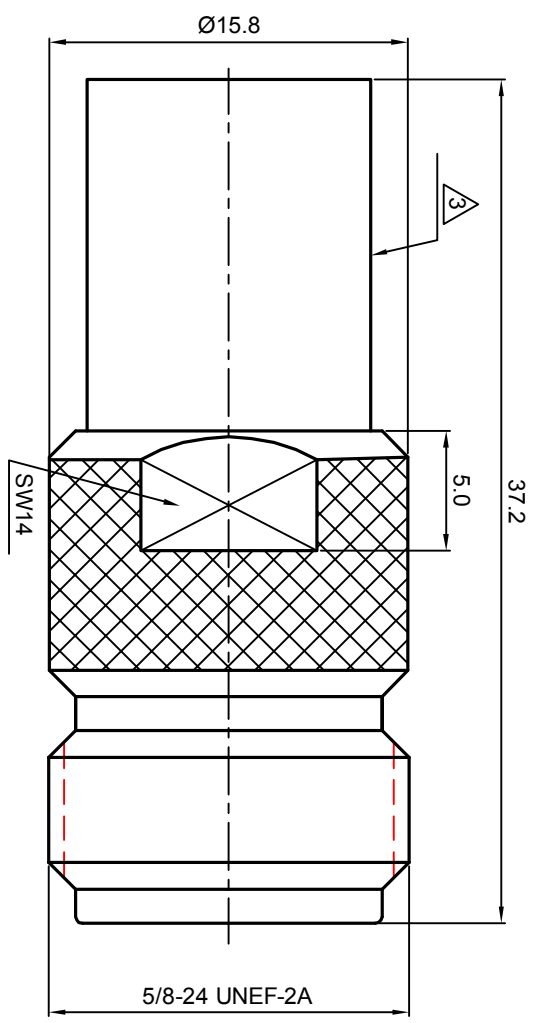
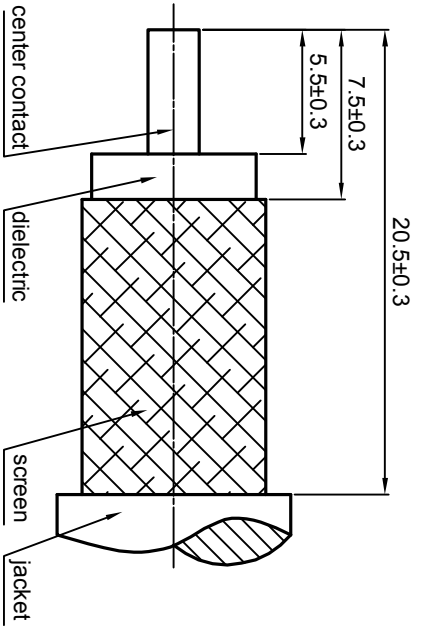


NOTES: (UNLESS OTHERWISE SPECIFIED)

- 1. The interface comply with IEC169-16
- 2. Part must be packaged to avoid any damaged during transportation
- ⚠ After crimping dimension should be AF/SW 10.9.

RECOMMENDED CABLE STRIPPING DIMENSIONS



1.6

REV.	DESCRIPTION	APPROVED	DATE	EON

MATERIAL		SEE BOM FOR DETAILS		THIRD ANGLE PROJECTION		TITLE	
FINISH		SEE BOM FOR DETAILS				<p>Zee-teq</p>	
TOLERANCES		Opface X ±1 1place X ±0.1 2place XX ±0.05 Angle ±5°		GENERAL ECCENTRICITY 0.06		N, JACK, CABLE MOUNT	
REMOVE BURRS AND SHARP EDGES				DRAWN BY Danny.D DATE 22OCT07		DWG. NO. 5065.N.JSC.11.133	
SURFACE		VOLUME		CHECKED BY		SCALE 3:1	
DO NOT SCALE DRAWING		DO NOT SCALE DRAWING		APPROVED BY		SIZE A4	
XXX - measuring point for plating		XXX - measuring point for plating				SHEET 1 of 1	
Plating part to be touched by gloves		Plating part to be touched by gloves				REV. S1	
Dimension apply before plating		Dimension apply before plating					
SEE BOM FOR DETAILS		SEE BOM FOR DETAILS					
NOTICE: Those drawings and specifications are the property of ZEEETEQ CORPORATION and used only for the specify purpose authorised by ZEEETEQ		NOTICE: Those drawings and specifications are the property of ZEEETEQ CORPORATION and used only for the specify purpose authorised by ZEEETEQ					