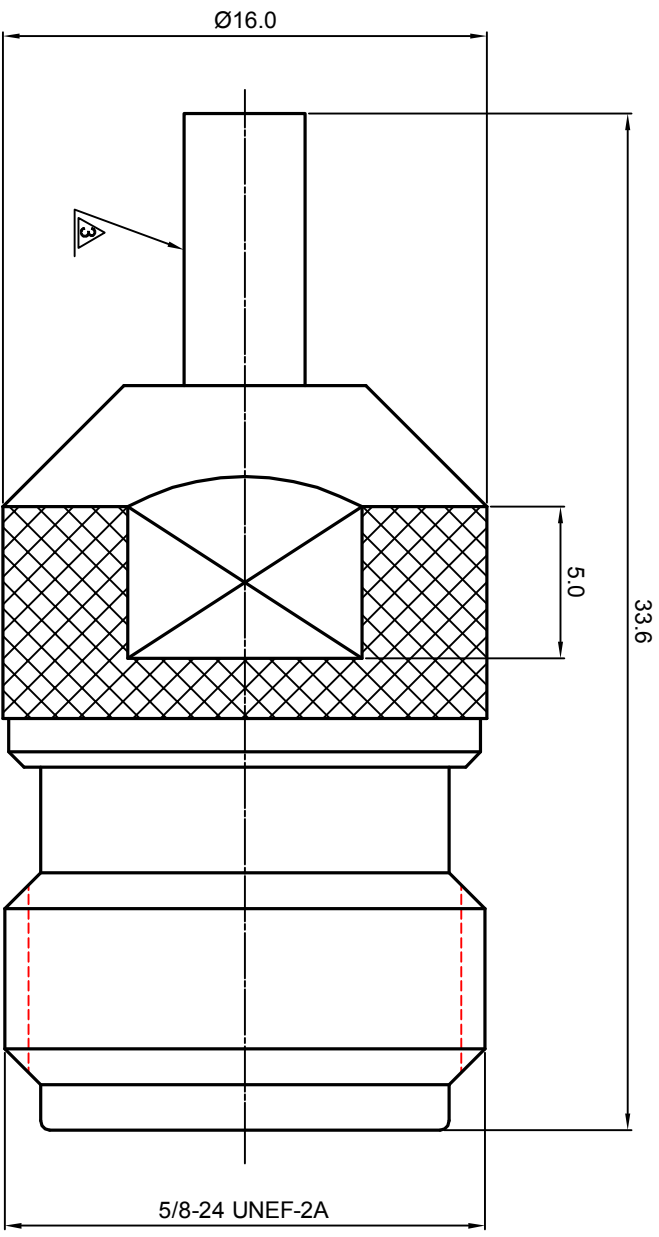
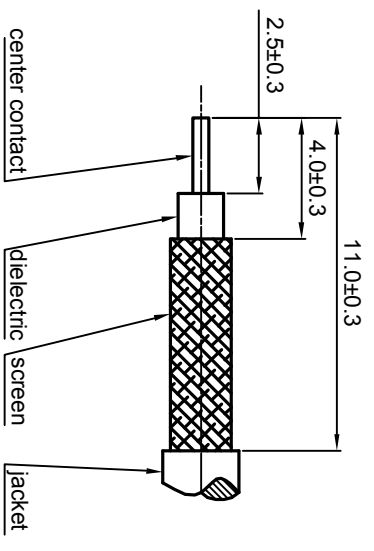


NOTES: (UNLESS OTHERWISE SPECIFIED)

1. Interface comply with IEC 169-16.
 2. Part must be packaged to avoid any damaged during transportation.
- ⚠ After crimping dimension should be AF/SW 3.25.



RECOMMENDED CABLE STRIPPING DIMENSIONS



| | | | | | | | | | |
|--------------------------------------|--|---------------------|--|---|--|------------------------------------|--|-----------------------------------|--|
| MATERIAL | | SEE BOM FOR DETAILS | | TOLERANCES | | THIRD ANGLE PROJECTION | | TITLE | |
| FINISH | | SEE BOM FOR DETAILS | | Opface X ±1 1place X ±0.1 2place XX ±0.05 Angle ±5° | | | | Zeeteq | |
| Plating part to be touched by gloves | | | | Remove burrs and sharp edges | | GENERAL ECCENTRICITY $\sqrt{0.06}$ | | N, JACK, CABLE MOUNT | |
| Dimension apply before plating | | | | | | DRAWN BY Danny.D DATE 17OCT07 | | DWG NO. 5210.N.JSC.07.133 | |
| XXX - measuring point for plating | | | | NOTICE: Those drawings and specifications are the property of ZEETEQ CORPORATION and used only for the specify purpose authorised by ZEETEQ | | CHECKED BY APPROVED BY | | SCALE 4:1 DO NOT SCALE DRAWING | |
| SURFACE | | VOLUME | | | | | | SIZE A4 SHEET 1 of 1 | |

1.6